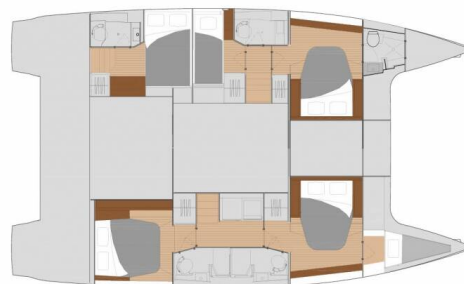


# FOUNTAIN PAJOT SAONA 47 QUINTET

Felicia (2018)

Catamaran Fountaine Pajot Saona 47 Quintet Felicia, built in 2018 is anchored in the Marina Frapa, Rogoznica, Šibenik region, Croatia. It has 5 + 1 cabins, can accommodate 10 + 2 + 1 people and has 5 + 1 toilets. Bed linen and kitchen equipment are included in the price.



## YACHT SPECIFICATIONS

Yacht Base

**Marina Frapa, Rogoznica, Croatia**

Yacht ID

**9603**

Brands

**Fountaine Pajot**

Yacht name

**Felicia**

Production year

**2018**

Length

**46 ft**

Cabins

**5 + 1**

Berths

**10 + 2 + 1**

Max Persons

**12**

WC

**5 + 1**

Engine

**2 x 60 HP**

Fuel tank

**940 l**



**WEBSITE**

[www.plujeme.cz](http://www.plujeme.cz)



**PHONE**

+420 720 755 085



**MOBILE**

+420 777 170 276



**E-MAIL**

[info@plujeme.cz](mailto:info@plujeme.cz)



**PLUJEME RÁDI S.R.O.**

Dlouhá 730/35, 11000 Praha 1 – Staré Město, Czech Republic

## STANDARD YACHT EQUIPMENT

Comfort	Cockpit cushions, Sundeck cushions
Deck	Anchor line, Anchor swivel, Bimini top, Black ball, Black conus, Boat hook, Bosun's chair (Safe seat) (boatswain's chair), Canister for water, Chairs, Cockpit fridge, Cockpit table, Cockpit table with light, Cockpit/stern, outside shower, Davit, Dinghy (byboat) pump, Dinghy with outboard engine, Electric anchor windlass, Fenders, Gangway, Hawser, Impeller, V-belt, oilfilter, Jerry cans for diesel, Main anchor, Mooring ropes, Plastic bucket, Repair box for dinghy, Round/globular fender, Spare anchor (Reserve, Auxiliary anchor), Spotlight / Headlights, Sprayhood, Spring line, Teak cockpit, Teak deck, Water hose
Entertainment	Fusion radio, Outdoor speakers
Galley	Dishwasher, Freezer, Gas bottles, Hot water, Kitchen utensils (Galley equipment, cutlery), Microwave, NESPRESSO coffee machine, Oven, Refrigerator
Interior	Barometer, Clock, Electric fans in cabins, Electric toilet, Lowerable salon table, Vacuum toilet
Navigation	3 blade folding propeller, AIS, Autopilot, GPS, GPS chart plotter, GPS chart plotter - cockpit, Hand bearing compass, Harbour guides, Logge/Lot/Speed/Wind, Navigation (Nautical) charts and nautical guide, Navigation set, Parallel ruler, Radar reflector, Screen, Spyglass, Spyglass with bearing compass, Tridata, Windex
Safety	Distress signals, Fire extinguisher, First aid kit, Flashlight, Fog horn, Life attol, Life belts (Safety harness), Life buoy + Flashing light, Life jackets, Liferaft, Self inflating life vest, Set of tools, VHF radio, Wire (shroud) cutter
Sails	Electric genoa winch, Electric halyard winch, Electric winch, Lazy bag, Lazy jacks, Spinnaker-device
Yacht electrics	Air Conditioning, Battery charger, Generator, Heating, Inverter, Shore connection 220 V, Solar panels, USB sockets



**WEBSITE**

[www.plujeme.cz](http://www.plujeme.cz)



**PHONE**

+420 720 755 085



**MOBILE**

+420 777 170 276



**E-MAIL**

[info@plujeme.cz](mailto:info@plujeme.cz)



**PLUJEME RÁDI S.R.O.**

Dlouhá 730/35, 11000 Praha 1 – Staré Město, Czech Republic

## SERVICES

SELECTED SERVICES	OBLIGATORY	PAYMENT TYPE	PRICE
<b>Permit</b> (Payable at the base) <b>Season: 2026.</b> Incl. In price: Final cleaning, Starter pack: Washing-up liquid, sponge, tea towel, Wettex, toilet paper, 1 set/bed line person, towel set per person, fuel gas bottle, Hygienic Pack ( 4x body lotion 30ml, 4x Shower gel 4x shampoo 4x Hard soap )	Yes	per booking	<b>590,00 €</b>
<b>WI-FI Internet connection on boat</b> (Payable at the base) <b>Season: 2026.</b> UNLIMITED	Yes	per booking	<b>0,00 €</b>
<b>Deposit insurance</b> (Payable at the base) <b>Season: 2026.</b> +100 EUR refundable deposit (CASH ONLY)	No	per booking	<b>400,00 €</b>
<b>Early Check in</b> (Payable at the base) <b>Season: 2026.</b> Check-in 1:00-2:00 pm max. 4 yachts	No	per booking	<b>250,00 €</b>
<b>Extra cleaning</b> (Payable at the base) <b>Season: 2026.</b>	No	per booking	<b>200,00 €</b>
<b>Hostess</b> (Payable at the base) <b>Season: 2026.</b> The hostess is an independent service provider, with charter company solely as an intermediary. Payment for the services is to be made directly to the hostess at start of the charter. Please note that hostess requires a dedicated cabin for the duration of the charter. Additionally, it is the charterer's responsibility to provide meals for the hostess throughout the charter period.	No	per day + food	<b>180,00 €</b>
<b>Pet on board</b> (Payable at the base) <b>Season: 2026.</b>	No	per booking	<b>100,00 €</b>
<b>Skipper</b> (Payable at the base) <b>Season: 2026.</b> Driving boat and dinghy, responsible for the crew, making reservations in the restaurants. The skipper is an independent service provider, with charter company solely as an intermediary. Payment for the services is to be made directly to the skipper at start of the charter. Please note that skipper requires a dedicated cabin for the duration of the charter. Additionally, it is the charterer's responsibility to provide meals for the skipper throughout the charter period.	No	per day + food	<b>200,00 €</b>
<b>Transfer</b> (Payable at the base) <b>Season: 2026.</b> price on daily base	No	per booking	<b>0,00 €</b>



**WEBSITE**  
www.plujeme.cz



**PHONE**  
+420 720 755 085



**MOBILE**  
+420 777 170 276



**E-MAIL**  
info@plujeme.cz



**PLUJEME RÁDI S.R.O.**  
Dlouhá 730/35, 11000 Praha 1 – Staré Město, Czech Republic

## ADDITIONAL EXTRAS

EXTRA	OBLIGATORY	PAYMENT TYPE	PRICE
<b>Beach towel</b> (Payable at the base) <b>Season: 2026.</b> Payable at the base	No	per booking	<b>5,00 €</b>
<b>Extra bedlinen</b> (Payable at the base) <b>Season: 2026.</b> 1 set/person - Payable at the base	No	per booking	<b>5,00 €</b>
<b>Extra towels</b> (Payable at the base) <b>Season: 2026.</b> 1 Set already included - Payable at the base	No	per booking	<b>5,00 €</b>
<b>Grill/Barbecue/Plancha</b> (Payable at the base) <b>Season: 2026.</b> Payable at the base	No	per week	<b>100,00 €</b>
<b>Ice maker</b> (Payable at the base) <b>Season: 2026.</b> Payable at the base	No	per week	<b>100,00 €</b>
<b>Outboard engine</b> (Payable at the base) <b>Season: 2026.</b> included in price - Payable at the base	No	per week	<b>0,00 €</b>
<b>Railing net (Safety net)</b> (Payable at the base) <b>Season: 2026.</b> not available for all yachts - Payable at the base	No	per booking	<b>120,00 €</b>
<b>Snorkeling equipment</b> (Payable at the base) <b>Season: 2026.</b> mask, flippers and snorkel - Payable at the base	No	per week	<b>35,00 €</b>
<b>Stand up paddle (SUP)</b> (Payable at the base) <b>Season: 2026.</b> Payable at the base	No	per week	<b>120,00 €</b>



**WEBSITE**  
www.plujeme.cz



**E-MAIL**  
info@plujeme.cz



**PHONE**  
+420 720 755 085



**PLUJEME RÁDI S.R.O.**  
Dlouhá 730/35, 11000 Praha 1 – Staré Město, Czech Republic



**MOBILE**  
+420 777 170 276

## PRICE AND AVAILABILITY

25.04. - 09.05.2026 NOT AVAILABLE	09.05. - 30.05.2026 NOT AVAILABLE	30.05. - 06.06.2026 NOT AVAILABLE	06.06. - 13.06.2026 <b>6.930 €</b> 9.900 €
13.06. - 20.06.2026 <b>7.560 €</b> 10.800 €	20.06. - 27.06.2026 <b>8.050 €</b> 11.500 €	27.06. - 04.07.2026 NOT AVAILABLE	04.07. - 11.07.2026 <b>8.190 €</b> 11.700 €
11.07. - 18.07.2026 <b>8.470 €</b> 12.100 €	18.07. - 25.07.2026 <b>8.470 €</b> 12.100 €	25.07. - 01.08.2026 NOT AVAILABLE	01.08. - 08.08.2026 NOT AVAILABLE
08.08. - 22.08.2026 NOT AVAILABLE	22.08. - 29.08.2026 <b>7.752 €</b> 10.200 €	29.08. - 05.09.2026 <b>7.296 €</b> 9.600 €	05.09. - 12.09.2026 NOT AVAILABLE
12.09. - 19.09.2026 NOT AVAILABLE	19.09. - 24.10.2026 NOT AVAILABLE	25.10. - 31.12.2026 NOT AVAILABLE	



### WEBSITE

[www.plujeme.cz](http://www.plujeme.cz)



### E-MAIL

[info@plujeme.cz](mailto:info@plujeme.cz)



### PHONE

+420 720 755 085



### MOBILE

+420 777 170 276



### PLUJEME RÁDI S.R.O.

Dlouhá 730/35, 11000 Praha 1 – Staré Město, Czech Republic