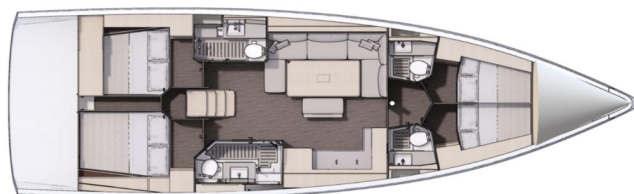


# DUFOUR 470

Bellatrix (2023)

Sailing yacht Dufour 470 Bellatrix, built in 2023 is anchored in the Marina Kastela, Split region, Croatia. It has 4 cabins, can accommodate 8 + 2 people and has 2 toilets. Bed linen and kitchen equipment are included in the price.



## YACHT SPECIFICATIONS

Yacht Base

**Marina Kastela, Croatia**

Yacht ID

**9539**

Brands

**Dufour**

Yacht name

**Bellatrix**

Production year

**2023**

Length

**49 ft**

Cabins

**4**

Berths

**8 + 2**

WC

**2**

Engine

**1 x 60 HP**

Fuel tank

**250 l**



**WEBSITE**

[www.plujeme.cz](http://www.plujeme.cz)



**PHONE**

+420 720 755 085



**MOBILE**

+420 777 170 276



**E-MAIL**

[info@plujeme.cz](mailto:info@plujeme.cz)



**PLUJEME RÁDI S.R.O.**

Dlouhá 730/35, 11000 Praha 1 – Staré Město, Czech Republic

## STANDARD YACHT EQUIPMENT

Comfort	<b>Cockpit cushions</b>
Deck	<b>Anchor line, Anchor swivel, Bimini top, Black ball, Black conus, Boat hook, Bosun's chair (Safe seat) (boatswain's chair), Canister for water, Cockpit grill, Cockpit table, Cockpit/stern, outside shower, Dinghy, Dinghy (byboat) pump, Electric anchor windlass, Fenders, Gangway, Hawser, Impeller, V-belt, oilfilter, Jerry cans for diesel, Main anchor, Mooring ropes, Plastic bucket, Repair box for dinghy, Round/globular fender, Spare anchor (Reserve, Auxiliary anchor), Spotlight / Headlights, Sprayhood, Spring line, Teak cockpit, Water hose</b>
Entertainment	<b>Outdoor speakers, Radio</b>
Galley	<b>Gas bottles, Hot water, Kitchen utensils (Galley equipment, cutlery), Refrigerator</b>
Interior	<b>Barometer, Clock, Lowerable salon table</b>
Navigation	<b>AIS, Autopilot, Bow thruster, GPS chart plotter, GPS chart plotter - cockpit, Harbour guides, Logge/Lot/Speed/Wind, Navigation (Nautical) charts and nautical guide, Navigation set, Radar reflector, Spyglass with bearing compass</b>
Safety	<b>Distress signals, Fire extinguisher, First aid kit, Flashlight, Fog horn, Life belts (Safety harness), Life buoy + Flashing light, Life jackets, Liferaft, Set of tools, VHF radio, Wire (shroud) cutter</b>
Yacht electrics	<b>Battery charger, Heating, Inverter, Shore connection 220 V, Solar panels</b>



**WEBSITE**

[www.plujeme.cz](http://www.plujeme.cz)



**PHONE**

+420 720 755 085



**MOBILE**

+420 777 170 276



**E-MAIL**

[info@plujeme.cz](mailto:info@plujeme.cz)



**PLUJEME RÁDI S.R.O.**

Dlouhá 730/35, 11000 Praha 1 – Staré Město, Czech Republic

## SERVICES

SELECTED SERVICES	OBLIGATORY	PAYMENT TYPE	PRICE
<b>Comfort Pack</b> (Payable at the base) <b>Season: 2026.</b> Payable in advance with reservation or upon check-in in cash or credit card; includes: VAT 25%, bed linen, towels, final cleaning, diver check upon check-out, gas in the kitchen, small start up kit, 5l fuel for the outboard engine	Yes	per booking	<b>380,00 €</b>
<b>Outboard engine GRATIS</b> (Payable at the base) <b>Season: 2026.</b>	Yes	per booking	<b>0,00 €</b>
<b>WiFi GRATIS ON BOAT</b> (Payable at the base) <b>Season: 2026.</b> UNLIMITED	Yes	per booking	<b>0,00 €</b>
<b>Comfort Pack Relax</b> (Payable at the base) <b>Season: 2026.</b> Comfort package relax (payable in advance with reservation or upon check-in in cash or credit card), suavity includes COMFORT PACK + DEPOSIT ELIMINATION (refundable part needs to be paid separately) ***+ 300 EUR refundable part*** Pack surcharge for 2 or more weeks - 90 EUR/week.	No	per booking	<b>630,00 €</b>
<b>Comfort Pack Relax PLUS</b> (Payable at the base) <b>Season: 2026.</b> Comfort package relax + (payable in advance with reservation or upon check-in in cash or credit card), suavity includes COMFORT PACK + DEPOSIT ELIMINATION (refundable part needs to be paid separately) + SUP + beach towels. ***+ 300 EUR refundable part****" Pack surcharge for 2 or more weeks - 150 EUR/week	No	per booking	<b>710,00 €</b>
<b>Cook</b> (Payable now) <b>Season: 2026.</b> available and confirmed per request	No	per day + food	<b>250,00 €</b>
<b>Crew change</b> (Payable at the base) <b>Season: 2026.</b>	No	per crew change	<b>50,00 €</b>
<b>Early afternoon boarding/check-in</b> (Payable at the base) <b>Season: 2026.</b> -> 3.00 pm - 4.00 pm	No	per booking	<b>75,00 €</b>
<b>Early boarding /Check in from 13:00</b> (Payable at the base) <b>Season: 2026.</b> Limited availability	No	per booking	<b>200,00 €</b>
<b>Extra cleaning</b> (Payable at the base) <b>Season: 2026.</b>	No	per booking	<b>342,00 €</b>

<b>Flexible booking</b> (Payable now)	No	per booking	<b>0,00 €</b>
<b>Season: 2026.</b> 10% of list price per booking			
<b>Hostess</b> (Payable now)	No	per day + food	<b>200,00 €</b>
<b>Season: 2026.</b> Obligatory payment and confirmation in advance, at least one month before the start date, prepares breakfast and light meal			
<b>Late check out</b> (Payable at the base)	No	per booking	<b>300,00 €</b>
<b>Season: 2026.</b> Saturdays till 10:00h; Late check-out can be confirmed only on check in			
<b>One way fee</b> (Payable at the base)	No	one-way	<b>700,00 €</b>
<b>Season: 2026.</b> + mooring fee in ACI Marina Komolac; Kaštela - Dubrovnik			
<b>Payment for upgrade</b> (Payable at the base)	No	per booking	<b>250,00 €</b>
<b>Season: 2026.</b> Comfort pack relax - (payable in advance with reservation or upon check-in in cash or credit card), suavity includes COMFORT PACK + DEPOSIT ELIMINATION (refundable part needs to be paid separately) ***+ 300 EUR refundable part*** Pack surcharge for 2 or more weeks - 90 EUR/week.			
<b>Payment for upgrade</b> (Payable at the base)	No	per booking	<b>330,00 €</b>
<b>Season: 2026.</b> Comfort pack relax plus - (payable in advance with reservation or upon check-in in cash or credit card), suavity includes COMFORT PACK + DEPOSIT ELIMINATION (refundable part needs to be paid separately) + SUP + beach towels. ***+ 300 EUR refundable part*** Pack surcharge for 2 or more weeks - 150 EUR/week			
<b>Permit for Montenegro</b> (Payable now)	No	per booking	<b>260,00 €</b>
<b>Season: 2026.</b>			
<b>Pet on board</b> (Payable at the base)	No	per booking	<b>100,00 €</b>
<b>Season: 2026.</b> Small or medium dog up to 25kg			
<b>Provisioning</b> (Payable at the base)	No	per booking	<b>0,00 €</b>
<b>Season: 2026.</b> Upon request + Price of groceries; To be done online			
<b>Re-booking fee</b> (Payable at the base)	No	per booking	<b>150,00 €</b>
<b>Season: 2026.</b>			
<b>Regatta charge</b> (Payable at the base)	No	per booking	<b>0,00 €</b>
<b>Season: 2026.</b> +10% from list price, double deposit to be paid			
<b>Sail refreshment</b> (Payable at the base)	No	per booking	<b>250,00 €</b>
<b>Season: 2026.</b>			

<b>Skipper</b> (Payable now)	No	per day + food	<b>220,00 €</b>
<b>Season: 2026.</b> Obligatory payment and confirmation in advance, at least one month before the start date			
<b>Sleep over after check out</b> (Payable at the base)	No	per booking	<b>300,00 €</b>
<b>Season: 2026.</b> Bookable if the boat is free; on request			
<b>Sleep over before check in</b> (Payable at the base)	No	per booking	<b>300,00 €</b>
<b>Season: 2026.</b> Bookable from Thursday before charter if boat is free			
<b>Transfer</b> (Payable at the base)	No	one-way	<b>35,00 €</b>
<b>Season: 2026.</b> Up to 3 pax; Taxi transfer Split Airport - Marina Kaštela or vice versa			
<b>Transfer</b> (Payable at the base)	No	one-way	<b>50,00 €</b>
<b>Season: 2026.</b> 4 to 8 pax; Taxi transfer Split Airport - Marina Kaštela or vice versa			



**WEBSITE**

[www.plujeme.cz](http://www.plujeme.cz)



**E-MAIL**

[info@plujeme.cz](mailto:info@plujeme.cz)



**PHONE**

+420 720 755 085



**MOBILE**

+420 777 170 276



**PLUJEME RÁDI S.R.O.**

Dlouhá 730/35, 11000 Praha 1 – Staré Město, Czech Republic

## ADDITIONAL EXTRAS

EXTRA	OBLIGATORY	PAYMENT TYPE	PRICE
<b>Automatic Inflatable Life Jacket</b> (Payable at the base) <i>Season: 2026. Payable at the base</i>	No	per person	<b>15,00 €</b>
<b>Beach towel</b> (Payable at the base) <i>Season: 2026. Payable at the base</i>	No	per piece	<b>6,00 €</b>
<b>Bean Bag Chair</b> (Payable at the base) <i>Season: 2026. 2x pieces - Payable at the base</i>	No	per week	<b>40,00 €</b>
<b>Beer packer</b> (Payable at the base) <i>Season: 2026. 50L - Payable at the base</i>	No	per week	<b>50,00 €</b>
<b>Donut</b> (Payable at the base) <i>Season: 2026. 2 pcs - Payable at the base</i>	No	per week	<b>40,00 €</b>
<b>E-bike</b> (Payable at the base) <i>Season: 2026. foldable (up to 25km/h and up to 50 km with single charge) - Payable at the base</i>	No	per week	<b>250,00 €</b>
<b>Electric scooter</b> (Payable at the base) <i>Season: 2026. + extra deposit 500 EUR - Payable at the base</i>	No	per week	<b>100,00 €</b>
<b>Electrical filter coffee maker</b> (Payable at the base) <i>Season: 2026. Payable at the base</i>	No	per week	<b>20,00 €</b>
<b>Extra bedlinen</b> (Payable at the base) <i>Season: 2026. Payable at the base</i>	No	per person	<b>15,00 €</b>
<b>Extra towels</b> (Payable at the base) <i>Season: 2026. 2 pcs - small + big one - Payable at the base</i>	No	per set	<b>5,00 €</b>
<b>Fishing equipment</b> (Payable at the base) <i>Season: 2026. 2 fishing sticks, 1 box with extra spares - Payable at the base</i>	No	per week	<b>120,00 €</b>
<b>Generator</b> (Payable at the base) <i>Season: 2026. Portable generator 2kW - Payable at the base</i>	No	per week	<b>150,00 €</b>
<b>Generator</b> (Payable at the base) <i>Season: 2026. Portable generator 3kW - Payable at the base</i>	No	per week	<b>200,00 €</b>

<b>Gennaker</b> (Payable at the base) <b>Season: 2026.</b> Payable at the base	No	per week	<b>280,00 €</b>
<b>Grill/Barbecue/Plancha</b> (Payable at the base) <b>Season: 2026.</b> Payable at the base	No	per week	<b>100,00 €</b>
<b>Gym equipment</b> (Payable at the base) <b>Season: 2026.</b> Weights 2X 3kg, 2X5kg,2X10 kg, Kettle bell 12kg, push up grips, Yoga mat, elastic resistance bands - Payable at the base	No	per week	<b>150,00 €</b>
<b>Ice maker</b> (Payable at the base) <b>Season: 2026.</b> Payable at the base	No	per week	<b>80,00 €</b>
<b>JBL extreme 3 speaker</b> (Payable at the base) <b>Season: 2026.</b> Payable at the base	No	per week	<b>50,00 €</b>
<b>JBL Party BOX 310 speaker</b> (Payable at the base) <b>Season: 2026.</b> Payable at the base	No	per week	<b>100,00 €</b>
<b>Kayak</b> (Payable at the base) <b>Season: 2026.</b> (2 seats) - Payable at the base	No	per week	<b>200,00 €</b>
<b>Portable air conditioning</b> (Payable at the base) <b>Season: 2026.</b> Payable at the base	No	per week	<b>150,00 €</b>
<b>Portable refrigerator</b> (Payable at the base) <b>Season: 2026.</b> Payable at the base	No	per week	<b>50,00 €</b>
<b>Railing net (Safety net)</b> (Payable at the base) <b>Season: 2026.</b> Payable at the base	No	per booking	<b>160,00 €</b>
<b>SEA-DOO underwater scooter</b> (Payable at the base) <b>Season: 2026.</b> Payable at the base	No	per week	<b>145,00 €</b>
<b>Snorkeling equipment</b> (Payable at the base) <b>Season: 2026.</b> 1 SET - Payable at the base	No	per week	<b>15,00 €</b>
<b>Stand up paddle (SUP)</b> (Payable at the base) <b>Season: 2026.</b> Payable at the base	No	per week	<b>120,00 €</b>



**WEBSITE**  
www.plujeme.cz



**E-MAIL**  
info@plujeme.cz



**PHONE**  
+420 720 755 085



**MOBILE**  
+420 777 170 276



**PLUJEME RÁDI S.R.O.**  
Dlouhá 730/35, 11000 Praha 1 – Staré Město, Czech Republic

## PRICE AND AVAILABILITY

02.05. - 09.05.2026 <b>1.769 €</b> 2.660 €	09.05. - 13.05.2026 NOT AVAILABLE	16.05. - 23.05.2026 <b>2.022 €</b> 3.040 €	23.05. - 30.05.2026 NOT AVAILABLE
30.05. - 06.06.2026 NOT AVAILABLE	06.06. - 13.06.2026 NOT AVAILABLE	13.06. - 20.06.2026 <b>3.686 €</b> 4.850 €	20.06. - 04.07.2026 NOT AVAILABLE
04.07. - 11.07.2026 NOT AVAILABLE	11.07. - 18.07.2026 NOT AVAILABLE	18.07. - 25.07.2026 <b>4.329 €</b> 5.772 €	25.07. - 01.08.2026 <b>4.387 €</b> 5.772 €
01.08. - 08.08.2026 <b>4.144 €</b> 5.600 €	08.08. - 15.08.2026 <b>4.256 €</b> 5.600 €	15.08. - 22.08.2026 <b>3.900 €</b> 5.200 €	22.08. - 29.08.2026 NOT AVAILABLE
29.08. - 05.09.2026 NOT AVAILABLE	05.09. - 12.09.2026 NOT AVAILABLE	12.09. - 19.09.2026 NOT AVAILABLE	19.09. - 26.09.2026 <b>3.259 €</b> 4.074 €
26.09. - 03.10.2026 NOT AVAILABLE	03.10. - 10.10.2026 <b>2.475 €</b> 3.094 €	10.10. - 17.10.2026 <b>2.018 €</b> 2.522 €	17.10. - 24.10.2026 <b>1.932 €</b> 2.415 €
24.10. - 31.10.2026 <b>1.854 €</b> 2.318 €	31.10. - 07.11.2026 <b>1.854 €</b> 2.318 €	07.11. - 14.11.2026 <b>1.777 €</b> 2.221 €	14.11. - 21.11.2026 <b>1.777 €</b> 2.221 €
21.11. - 28.11.2026 <b>1.777 €</b> 2.221 €	28.11. - 05.12.2026 <b>1.777 €</b> 2.221 €		



WEBSITE

[www.plujeme.cz](http://www.plujeme.cz)



E-MAIL

[info@plujeme.cz](mailto:info@plujeme.cz)



PHONE

+420 720 755 085



MOBILE

+420 777 170 276



PLUJEME RÁDI S.R.O.

Dlouhá 730/35, 11000 Praha 1 – Staré Město, Czech Republic

## PRICE AND AVAILABILITY

05.12. - 12.12.2026

**1.777 €** 2.221 €

12.12. - 19.12.2026

**1.777 €** 2.221 €

19.12. - 26.12.2026

**1.777 €** 2.221 €



### WEBSITE

[www.plujeme.cz](http://www.plujeme.cz)



### E-MAIL

[info@plujeme.cz](mailto:info@plujeme.cz)



### PHONE

+420 720 755 085



### MOBILE

+420 777 170 276



### PLUJEME RÁDI S.R.O.

Dlouhá 730/35, 11000 Praha 1 – Staré Město, Czech Republic