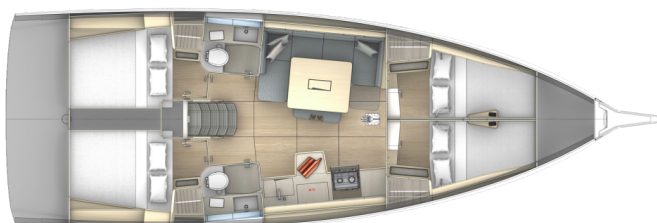


# DUFOUR 41 PERFORMANCE

Bella II (2025)

Sailing yacht Dufour 41 Performance Bella II, built in 2025 is anchored in the **Marina Kornati, Biograd, Zadar region, Croatia**. It has **4 cabins**, can accommodate **8 + 2 people** and has **2 toilets**. Bed linen and kitchen equipment are included in the price.



## YACHT SPECIFICATIONS

Yacht Base

**Marina Kornati, Biograd, Croatia**

Yacht ID

**8785**

Brands

**Dufour**

Yacht name

**Bella II**

Production year

**2025**

Length

**42 ft**

Cabins

**4**

Berths

**8 + 2**

Max Persons

**10**

WC

**2**

Engine

**1 x 50 HP**

Fuel tank

**250 l**



**WEBSITE**

[www.plujeme.cz](http://www.plujeme.cz)



**PHONE**

+420 720 755 085



**MOBILE**

+420 777 170 276



**E-MAIL**

[info@plujeme.cz](mailto:info@plujeme.cz)



**PLUJEME RÁDI S.R.O.**

Dlouhá 730/35, 11000 Praha 1 – Staré Město, Czech Republic

## STANDARD YACHT EQUIPMENT

Comfort	<b>Cockpit cushions</b>
Deck	<b>Anchor line, Anchor swivel, Bimini top, Black ball, Black conus, Boat hook, Bosun's chair (Safe seat) (boatswain's chair), Canister for water, Cockpit grill, Cockpit table with light, Cockpit/stern, outside shower, Dinghy, Dinghy (byboat) pump, Electric anchor windlass, Fenders, Gangway, Hawser, Impeller, V-belt, oilfilter, Jerry cans for diesel, Main anchor, Mooring ropes, Plastic bucket, Repair box for dinghy, Round/globular fender, Spare anchor (Reserve, Auxiliary anchor), Sprayhood, Spring line, Teak cockpit, Water hose</b>
Entertainment	<b>Outdoor speakers, Radio</b>
Galley	<b>Gas bottles, Hot water, Kitchen utensils (Galley equipment, cutlery), Refrigerator</b>
Interior	<b>Barometer, Clock, Lowerable salon table</b>
Navigation	<b>3 blade folding propeller, AIS, Autopilot, Bow thruster, Bretonplotter, GPS chart plotter - cockpit, Hand bearing compass, Harbour guides, Logge/Lot/Speed/Wind, Navigation (Nautical) charts and nautical guide, Navigation set, Parallel ruler, Radar reflector, Spyglass, Windex</b>
Safety	<b>Distress signals, Fire extinguisher, First aid kit, Flashlight, Fog horn, Life belts (Safety harness), Life buoy + Flashing light, Life jackets, Liferaft, Set of tools, VHF radio, Wire (shroud cutter)</b>
Sails	<b>Lazy bag, Lazy jacks</b>
Yacht electrics	<b>Batteries, Battery charger, Battery storage system, Heating, Inverter, Shore connection 220 V, Solar panels</b>



**WEBSITE**

[www.plujeme.cz](http://www.plujeme.cz)



**PHONE**

+420 720 755 085



**MOBILE**

+420 777 170 276



**E-MAIL**

[info@plujeme.cz](mailto:info@plujeme.cz)



**PLUJEME RÁDI S.R.O.**

Dlouhá 730/35, 11000 Praha 1 – Staré Město, Czech Republic

## SERVICES

SELECTED SERVICES	OBLIGATORY	PAYMENT TYPE	PRICE
<b>Charter package</b> (Payable at the base) <b>Season: 2026.</b> incl. Permit, outboard engine, Wi-Fi Internet (5 GB), bed linen (1 set/ person)	Yes	per booking	<b>320,00 €</b>
<b>Early afternoon boarding/check-in</b> (Payable at the base) <b>Season: 2026.</b> -> 2.00 pm – 4.00 pm, max. 15 yachts	No	per booking	<b>75,00 €</b>
<b>Early boarding/check-in</b> (Payable at the base) <b>Season: 2026.</b> -> 12.30 pm – 2.00 pm, max 5 yachts	No	per booking	<b>200,00 €</b>
<b>Extra cleaning</b> (Payable at the base) <b>Season: 2026.</b>	No	per booking	<b>200,00 €</b>
<b>Hostess</b> (Payable at the base) <b>Season: 2026.</b> + own cabin; external service provider, direct billing	No	per day + food	<b>200,00 €</b>
<b>Parking</b> (Payable at the base) <b>Season: 2026.</b> Price per car; secured parking at the Pitter Dry Dock (Marina Service Center - MSC) Biograd, incl. transfer for 1 person on the check-in/ - out day: Marina Kornati – MSC: FRI 16:00 – 20:00 p.m. depart. every full hour, SAT 06:30 – 08:00 a.m. depart. every hour MSC – Marina Kornati: SAT, every hour, start at 08:30 – 18:30 p.m.	No	per week	<b>50,00 €</b>
<b>Regatta charge</b> (Payable at the base) <b>Season: 2026.</b> ON REQUEST	No	per booking	<b>0,00 €</b>
<b>Skipper</b> (Payable at the base) <b>Season: 2026.</b> + own cabin; external service provider	No	per day + food	<b>200,00 €</b>
<b>VIP comfort package</b> (Payable at the base) <b>Season: 2026.</b> Free secured parking at Pitter Drydock, charging option for electric cars (max. 2,4kW), free transfer to the marina and back with possibility for a stopover at the shopping center and back, air-conditioned lounge area, incl. welcome drink, assistance with luggage transfer directly to the yacht, refrigerator for temporary storage of food (no drinks), free Wi-Fi and vending machines with reasonably priced snacks and drinks in the lounge area, departure and pick-up by personal arrangement considering regular check-in/-out times. Max. 5 yachts	No	per booking	<b>350,00 €</b>

**WI-FI Internet connection on boat** (Payable at the base)

No

per week

**30,00 €**

**Season: 2026.** unlimited / depending on the network reception (5 GB are included in the Charter package)



**WEBSITE**

[www.plujeme.cz](http://www.plujeme.cz)



**E-MAIL**

[info@plujeme.cz](mailto:info@plujeme.cz)



**PHONE**

+420 720 755 085



**MOBILE**

+420 777 170 276



**PLUJEME RÁDI S.R.O.**

Dlouhá 730/35, 11000 Praha 1 – Staré Město, Czech Republic

## ADDITIONAL EXTRAS

EXTRA	OBLIGATORY	PAYMENT TYPE	PRICE
<b>Extra bedlinen</b> (Payable at the base) <b>Season: 2026.</b> 1 set/ person is included in the charter package - Payable at the base	No	per set	<b>10,00 €</b>
<b>Flexible bulkhead system</b> (Payable at the base) <b>Season: 2026.</b> Payable at the base	No	per booking	<b>180,00 €</b>
<b>Gennaker</b> (Payable at the base) <b>Season: 2026.</b> Payable at the base	No	per booking	<b>350,00 €</b>
<b>Glass bottom dinghy</b> (Payable at the base) <b>Season: 2026.</b> Formentera 330 PC + approx. 3 HP ePropulsion engine, max. 4 persons, in 8,5 h fully loaded with 12 V - Payable at the base	No	per week	<b>220,00 €</b>
<b>Grill/Barbecue/Plancha</b> (Payable at the base) <b>Season: 2026.</b> Payable at the base	No	per booking	<b>65,00 €</b>
<b>Ice box</b> (Payable at the base) <b>Season: 2026.</b> Mobile Cooler Box (no power connection): approx. 52L, filled with approx. 6kg ice cubes - limited availability, subject to on-site ice availability For drinks and ice only. Box must be returned clean and undamaged. Max. 5 yachts. - Payable at the base	No	per booking	<b>35,00 €</b>
<b>Ice maker</b> (Payable at the base) <b>Season: 2026.</b> operating with - shorepower or - Inverter min. 2.000 W or - Generator - Payable at the base	No	per booking	<b>45,00 €</b>
<b>Main sail traveler</b> (Payable at the base) <b>Season: 2026.</b> INSTEAD OF THE COCKPIT TABLE - Payable at the base	No	per booking	<b>400,00 €</b>
<b>NESPRESSO coffee machine</b> (Payable at the base) <b>Season: 2026.</b> operating with - shorepower or - Inverter min. 2000 W or - Generator - Payable at the base	No	per booking	<b>45,00 €</b>
<b>Racing sails</b> (Payable at the base) <b>Season: 2026.</b> 108% genoa / XRP Cruiser ECO (Elvström polyester laminat sail) - Payable at the base	No	per week	<b>190,00 €</b>
<b>Railing net (Safety net)</b> (Payable at the base) <b>Season: 2026.</b> incl. mounting and unmounting - Payable at the base	No	per booking	<b>180,00 €</b>

<b>Railing net (Safety net)</b> (Payable at the base)	No	per booking	<b>35,00 €</b>
<i>Season: 2026. To be mounted / unmounted by the client (Net and mounting material must be returned by the crew after the charter) - Payable at the base</i>			
<b>Stand up paddle (SUP)</b> (Payable at the base)	No	per week	<b>100,00 €</b>
<i>Season: 2026. Payable at the base</i>			
<b>Towels</b> (Payable at the base)	No	per set	<b>10,00 €</b>
<i>Season: 2026. Payable at the base</i>			



**WEBSITE**

[www.plujeme.cz](http://www.plujeme.cz)



**E-MAIL**

[info@plujeme.cz](mailto:info@plujeme.cz)



**PHONE**

+420 720 755 085



**MOBILE**

+420 777 170 276



**PLUJEME RÁDI S.R.O.**

Dlouhá 730/35, 11000 Praha 1 – Staré Město, Czech Republic

## PRICE AND AVAILABILITY

<b>25.04. - 02.05.2026</b> NOT AVAILABLE	<b>02.05. - 09.05.2026</b> NOT AVAILABLE	<b>09.05. - 16.05.2026</b> NOT AVAILABLE	<b>16.05. - 23.05.2026</b> NOT AVAILABLE
<b>23.05. - 30.05.2026</b> NOT AVAILABLE	<b>30.05. - 06.06.2026</b> NOT AVAILABLE	<b>06.06. - 13.06.2026</b> NOT AVAILABLE	<b>13.06. - 20.06.2026</b> NOT AVAILABLE
<b>20.06. - 27.06.2026</b> NOT AVAILABLE	<b>27.06. - 04.07.2026</b> NOT AVAILABLE	<b>04.07. - 11.07.2026</b> NOT AVAILABLE	<b>11.07. - 18.07.2026</b> NOT AVAILABLE
<b>18.07. - 08.08.2026</b> NOT AVAILABLE	<b>08.08. - 15.08.2026</b> <b>3.244 €</b> 4.055 €	<b>15.08. - 22.08.2026</b> <b>3.272 €</b> 4.090 €	<b>22.08. - 29.08.2026</b> NOT AVAILABLE
<b>29.08. - 05.09.2026</b> NOT AVAILABLE	<b>05.09. - 12.09.2026</b> NOT AVAILABLE	<b>12.09. - 19.09.2026</b> <b>3.168 €</b> 3.960 €	<b>19.09. - 26.09.2026</b> NOT AVAILABLE
<b>26.09. - 03.10.2026</b> <b>2.376 €</b> 2.970 €	<b>03.10. - 10.10.2026</b> <b>1.720 €</b> 2.150 €	<b>10.10. - 17.10.2026</b> NOT AVAILABLE	<b>17.10. - 24.10.2026</b> NOT AVAILABLE
<b>24.10. - 31.10.2026</b> NOT AVAILABLE	<b>31.10. - 07.11.2026</b> <b>1.080 €</b> 1.350 €	<b>07.11. - 14.11.2026</b> <b>1.200 €</b> 1.500 €	<b>14.11. - 21.11.2026</b> <b>1.160 €</b> 1.450 €
<b>22.11. - 31.12.2026</b> NOT AVAILABLE			



**WEBSITE**

[www.plujeme.cz](http://www.plujeme.cz)



**E-MAIL**

[info@plujeme.cz](mailto:info@plujeme.cz)



**PHONE**

+420 720 755 085



**MOBILE**

+420 777 170 276



**PLUJEME RÁDI S.R.O.**

Dlouhá 730/35, 11000 Praha 1 – Staré Město, Czech Republic