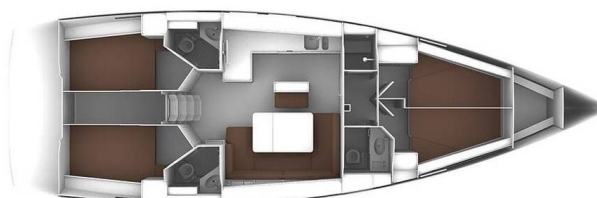


# BAVARIA CRUISER 46

Ioli (2016)

Sailing yacht **Bavaria Cruiser 46 Ioli**, built in **2016** is anchored in the **Athens, Alimos marina, Athens area/Saronic/Peloponese, Greece**. It has **4 cabins**, can accommodate **8 people** and has **3 toilets**. Bed linen and kitchen equipment are included in the price.



## YACHT SPECIFICATIONS

Yacht Base

**Athens, Alimos marina, Greece**

Yacht ID

**545**

Brands

**Bavaria**

Yacht name

**Ioli**

Production year

**2016**

Length

**47 ft**

Cabins

**4**

Berths

**8**

WC

**3**

Engine

**1 x 55 HP**

Fuel tank

**210 l**



**WEBSITE**

[www.plujeme.cz](http://www.plujeme.cz)



**PHONE**

+420 720 755 085



**MOBILE**

+420 777 170 276



**E-MAIL**

[info@plujeme.cz](mailto:info@plujeme.cz)



**PLUJEME RÁDI S.R.O.**

Dlouhá 730/35, 11000 Praha 1 – Staré Město, Czech Republic

## STANDARD YACHT EQUIPMENT

Comfort	<b>Bedlinen and towels, Blankets, Cockpit cushions, Pillows</b>
Deck	<b>Anchor with chain, Bimini top, Black ball, Black conus, Boat hook, Bosun's chair (Safe seat) (boatswain's chair), Cockpit table, Cockpit/stern, outside shower, Deck brush, Dinghy, Electric anchor windlass, Fenders, Fuel funnel, Gangway, Jerry cans for diesel, Main Deck Compass, Mooring ropes, Plastic bucket, Repair box for dinghy, Spare anchor (Reserve, Auxiliary anchor), Sprayhood, Sun tent/cover, Swimming ladder, Teak cockpit, Water hose</b>
Entertainment	<b>Indoor speakers, Radio CD mp3 player, Snorkeling equipment</b>
Galley	<b>Additional gas bottle, Broom and dustpan, Gas bottles, Gas cookers, Hot water, Kitchen utensils (Galley equipment, cutlery), Pressurized water system, Refrigerator, Water pump</b>
Interior	<b>Barometer, Clock, Inside shower, Yacht documents</b>
Navigation	<b>Autopilot, Binoculars, Bow thruster, Divider, nautic chart, Echosounder/Depthsonder, GPS chart plotter, Hand bearing compass, Log, Nautical charts, Navigation set, Navigation/position Lights, Pilot book, Radar reflector, Tridata, Wind instrument/Anemometer, Windex</b>
Safety	<b>Black Water Tank, Distress flare box, Distress signals, Emergency tiller, Engine spare parts, EPIRB-Distress radio beacons, Fire extinguisher, First aid kit, Floating light, Fog horn, Horseshoe lifebuoy, Life belts (Safety harness), Life jacket (children), Life jackets, Lifelines, Liferaft, Oars (Paddles), Padlock, Repair kit, Set of tools, Torch, VHF radio, Wire (shroud) cutter</b>
Yacht electrics	<b>Air Conditioning, Batteries, Battery charger, DSC station, Inverter, Shore connection 220 V, Solar panels</b>



**WEBSITE**

[www.plujeme.cz](http://www.plujeme.cz)



**PHONE**

+420 720 755 085



**MOBILE**

+420 777 170 276



**E-MAIL**

[info@plujeme.cz](mailto:info@plujeme.cz)



**PLUJEME RÁDI S.R.O.**

Dlouhá 730/35, 11000 Praha 1 – Staré Město, Czech Republic

## SERVICES

SELECTED SERVICES	OBLIGATORY	PAYMENT TYPE	PRICE
<b>Final cleaning</b> (Payable at the base) <b>Season: 2026.</b>	Yes	per booking	<b>230,00 €</b>
<b>Crew change</b> (Payable at the base) <b>Season: 2026.</b> Crew Change (only in our bases) during the charter is allowed up to 75%. If it is over than 75%, is considered a new charter. Crew change fees in our bases (the skipper remains the same), price includes: water, electricity and marina fees/services. Charter Pack, for crew changes as per our Price List.	No	per booking	<b>100,00 €</b>
<b>Hostess</b> (Payable at the base) <b>Season: 2026.</b> plus meal	No	per day	<b>170,00 €</b>
<b>Provisioning</b> (Payable at the base) <b>Season: 2026.</b>	No	per booking	<b>20,00 €</b>
<b>Skipper</b> (Payable at the base) <b>Season: 2026.</b> plus meal	No	per day	<b>200,00 €</b>

**WEBSITE**[www.plujeme.cz](http://www.plujeme.cz)**E-MAIL**[info@plujeme.cz](mailto:info@plujeme.cz)**PHONE**

+420 720 755 085

**MOBILE**

+420 777 170 276

**PLUJEME RÁDI S.R.O.**

Dlouhá 730/35, 11000 Praha 1 – Staré Město, Czech Republic

## ADDITIONAL EXTRAS

EXTRA	OBLIGATORY	PAYMENT TYPE	PRICE
<b>Blister</b> (Payable at the base) <b>Season: 2026.</b> + extra deposit 600€ - Payable at the base	No	per week	<b>200,00 €</b>
<b>Extra bedlinen</b> (Payable at the base) <b>Season: 2026.</b> Payable at the base	No	per set	<b>10,00 €</b>
<b>Outboard engine</b> (Payable at the base) <b>Season: 2026.</b> 160€/2 weeks - Payable at the base	No	per week	<b>80,00 €</b>
<b>Railing net (Safety net)</b> (Payable at the base) <b>Season: 2026.</b> not installed - Payable at the base	No	per booking	<b>150,00 €</b>
<b>Railing net (Safety net)</b> (Payable at the base) <b>Season: 2026.</b> installed - Payable at the base	No	per booking	<b>250,00 €</b>
<b>Spinnaker</b> (Payable at the base) <b>Season: 2026.</b> + extra deposit 600€ - Payable at the base	No	per week	<b>200,00 €</b>
<b>Stand up paddle (SUP)</b> (Payable at the base) <b>Season: 2026.</b> Payable at the base	No	per week	<b>120,00 €</b>
<b>Windsurf</b> (Payable at the base) <b>Season: 2026.</b> Payable at the base	No	per week	<b>80,00 €</b>



**WEBSITE**

[www.plujeme.cz](http://www.plujeme.cz)



**E-MAIL**

[info@plujeme.cz](mailto:info@plujeme.cz)



**PHONE**

+420 720 755 085



**MOBILE**

+420 777 170 276



**PLUJEME RÁDI S.R.O.**

Dlouhá 730/35, 11000 Praha 1 – Staré Město, Czech Republic

## PRICE AND AVAILABILITY

13.06. - 20.06.2026 <b>3.358 €</b> 3.950 €	20.06. - 27.06.2026 NOT AVAILABLE	27.06. - 04.07.2026 NOT AVAILABLE	04.07. - 11.07.2026 ON OPTION
11.07. - 18.07.2026 <b>3.358 €</b> 3.950 €	18.07. - 25.07.2026 <b>3.358 €</b> 3.950 €	25.07. - 01.08.2026 <b>3.528 €</b> 4.150 €	01.08. - 08.08.2026 NOT AVAILABLE
08.08. - 15.08.2026 <b>3.528 €</b> 4.150 €	15.08. - 22.08.2026 <b>3.279 €</b> 3.950 €	22.08. - 29.08.2026 <b>3.358 €</b> 3.950 €	29.08. - 05.09.2026 <b>3.358 €</b> 3.950 €
05.09. - 12.09.2026 <b>3.555 €</b> 3.950 €	12.09. - 19.09.2026 NOT AVAILABLE	19.09. - 03.10.2026 NOT AVAILABLE	03.10. - 10.10.2026 NOT AVAILABLE
10.10. - 17.10.2026 <b>2.295 €</b> 2.700 €	17.10. - 24.10.2026 <b>2.295 €</b> 2.700 €	24.10. - 31.10.2026 NOT AVAILABLE	31.10. - 07.11.2026 <b>2.430 €</b> 2.700 €
07.11. - 14.11.2026 <b>2.430 €</b> 2.700 €	14.11. - 21.11.2026 <b>2.430 €</b> 2.700 €	21.11. - 28.11.2026 <b>2.430 €</b> 2.700 €	28.11. - 05.12.2026 <b>2.430 €</b> 2.700 €
05.12. - 12.12.2026 <b>2.430 €</b> 2.700 €	12.12. - 19.12.2026 <b>2.430 €</b> 2.700 €	19.12. - 26.12.2026 <b>2.430 €</b> 2.700 €	



WEBSITE

[www.plujeme.cz](http://www.plujeme.cz)



E-MAIL

[info@plujeme.cz](mailto:info@plujeme.cz)



PHONE

+420 720 755 085



MOBILE

+420 777 170 276



PLUJEME RÁDI S.R.O.

Dlouhá 730/35, 11000 Praha 1 – Staré Město, Czech Republic