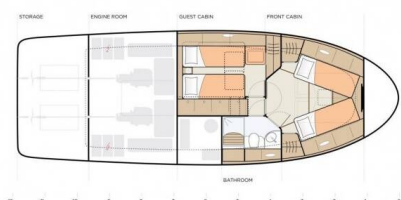


# GREENLINE 40

D&D (2023)

Motor yacht **Greenline 40 D&D**, built in **2023** is anchored in the **Marina Kornati, Biograd, Zadar region, Croatia**. It has **2 cabins**, can accommodate **4 + 2 people** and has **1 toilets**. Bed linen and kitchen equipment are included in the price.



## YACHT SPECIFICATIONS

Yacht Base

**Marina Kornati, Biograd, Croatia**

Yacht ID

**4874**

Brands

**Greenline**

Yacht name

**D&D**

Production year

**2023**

Length

**39 ft**

Cabins

**2**

Berths

**4 + 2**

Max Persons

**6**

WC

**1**

Engine

**2 x 250 HP**

Fuel tank

**700 l**



**WEBSITE**

[www.plujeme.cz](http://www.plujeme.cz)



**PHONE**

+420 720 755 085



**MOBILE**

+420 777 170 276



**E-MAIL**

[info@plujeme.cz](mailto:info@plujeme.cz)



**PLUJEME RÁDI S.R.O.**

Dlouhá 730/35, 11000 Praha 1 – Staré Město, Czech Republic

## STANDARD YACHT EQUIPMENT

Comfort	<b>Cockpit cushions, Sundeck cushions</b>
Deck	<b>Anchor with chain, Bathing platform, Cockpit table, Cockpit/stern, outside shower, Dinghy, Electric anchor windlass, Fenders, Main anchor, Main Deck Compass, Mooring ropes, Sea/Storm drogue anchor, Swimming ladder, Teak cockpit, Teak seats in cockpit</b>
Entertainment	<b>Bluetooth player, Fusion radio, LCD TV, Outdoor speakers, Remote control for radio in cockpit, USB</b>
Galley	<b>Dishwasher, Freezer, Hot water, Induction hot plate, Microwave, Refrigerator</b>
Interior	<b>Ambiental lighting, Electric toilet</b>
Navigation	<b>Autopilot, Bow thruster, GPS chart plotter, Hand bearing compass, Harbour guides, Navigation (Nautical) charts and nautical guide, Stern thruster</b>
Safety	<b>Black Water Tank, Fire extinguisher, First aid kit, Fog horn, Life jackets, Set of tools, Signal rockets and torches, Torch</b>
Yacht electrics	<b>Batteries, Heating, Inverter, Shore connection 220 V, Solar panels</b>



#### WEBSITE

[www.plujeme.cz](http://www.plujeme.cz)



#### E-MAIL

[info@plujeme.cz](mailto:info@plujeme.cz)



#### PHONE

+420 720 755 085



#### MOBILE

+420 777 170 276



#### PLUJEME RÁDI S.R.O.

Dlouhá 730/35, 11000 Praha 1 – Staré Město, Czech Republic

## SERVICES

SELECTED SERVICES	OBLIGATORY	PAYMENT TYPE	PRICE
<b>Base costs</b> (Payable at the base) <b>Season: 2026.</b> Check-in, check-out, Final cleaning, bed linen per person on crew list, Diver at the check-out, Gas	Yes	per booking	<b>300,00 €</b>
<b>Deposit insurance</b> (Payable at the base) <b>Season: 2026.</b> The non-refundable deposit can be purchased on-site at a cost of ca. 12% of the deposit for the first and second week. For charters lasting three or more weeks, a new deposit insurance policy must be purchased. Please note that the deposit insurance does not cover clogged toilets, waste tanks, or missing fuel. Therefore, a refundable part of the deposit is mandatory: 1000 EUR (payable in cash or by credit card).	No	per booking	<b>360,00 €</b>
<b>Overnight on board</b> (Payable at the base) <b>Season: 2026.</b> depending on availability	No	per booking	<b>200,00 €</b>
<b>Pet on board</b> (Payable at the base) <b>Season: 2026.</b>	No	per booking	<b>150,00 €</b>
<b>Priority check in</b> (Payable now) <b>Season: 2026.</b> check in between 13:00 - 14:00h. Limited offer, max 5 boats per Saturday	No	per booking	<b>150,00 €</b>



**WEBSITE**

[www.plujeme.cz](http://www.plujeme.cz)



**PHONE**

+420 720 755 085



**MOBILE**

+420 777 170 276



**E-MAIL**

[info@plujeme.cz](mailto:info@plujeme.cz)



**PLUJEME RÁDI S.R.O.**

Dlouhá 730/35, 11000 Praha 1 – Staré Město, Czech Republic

## ADDITIONAL EXTRAS

EXTRA	OBLIGATORY	PAYMENT TYPE	PRICE
<b>Automatic Inflatable Life Jacket</b> <i>(Payable at the base)</i> <b>Season: 2026.</b> <i>Payable at the base</i>	No	per week/ person	<b>15,00 €</b>
<b>Extra bedlinen</b> <i>(Payable at the base)</i> <b>Season: 2026.</b> <i>Payable at the base</i>	No	per cabin	<b>12,00 €</b>
<b>Outboard engine</b> <i>(Payable at the base)</i> <b>Season: 2026.</b> <i>+fuel (5L) - Payable at the base</i>	No	per week	<b>80,00 €</b>
<b>Stand up paddle (SUP)</b> <i>(Payable at the base)</i> <b>Season: 2026.</b> <i>Payable at the base</i>	No	per week	<b>80,00 €</b>
<b>Towels</b> <i>(Payable at the base)</i> <b>Season: 2026.</b> <i>(2 towels size 50 x 100, 1 towel size 70 x 140 / per person) - Payable at the base</i>	No	per set	<b>8,00 €</b>



**WEBSITE**

[www.plujeme.cz](http://www.plujeme.cz)



**E-MAIL**

[info@plujeme.cz](mailto:info@plujeme.cz)



**PHONE**

+420 720 755 085



**MOBILE**

+420 777 170 276



**PLUJEME RÁDI S.R.O.**

Dlouhá 730/35, 11000 Praha 1 – Staré Město, Czech Republic

## PRICE AND AVAILABILITY

<b>25.04. - 02.05.2026</b> NOT AVAILABLE	<b>02.05. - 09.05.2026</b> <b>2.040 €</b> 3.400 €	<b>09.05. - 16.05.2026</b> <b>2.040 €</b> 3.400 €	<b>16.05. - 30.05.2026</b> NOT AVAILABLE
<b>30.05. - 13.06.2026</b> NOT AVAILABLE	<b>13.06. - 20.06.2026</b> NOT AVAILABLE	<b>20.06. - 27.06.2026</b> <b>4.060 €</b> 5.800 €	<b>27.06. - 04.07.2026</b> NOT AVAILABLE
<b>04.07. - 18.07.2026</b> NOT AVAILABLE	<b>18.07. - 25.07.2026</b> NOT AVAILABLE	<b>25.07. - 01.08.2026</b> <b>4.200 €</b> 6.000 €	<b>01.08. - 08.08.2026</b> NOT AVAILABLE
<b>08.08. - 15.08.2026</b> <b>4.060 €</b> 5.800 €	<b>15.08. - 22.08.2026</b> <b>3.920 €</b> 5.600 €	<b>22.08. - 29.08.2026</b> NOT AVAILABLE	<b>29.08. - 12.09.2026</b> NOT AVAILABLE
<b>12.09. - 19.09.2026</b> ON OPTION	<b>19.09. - 26.09.2026</b> <b>2.660 €</b> 3.800 €	<b>26.09. - 03.10.2026</b> <b>2.380 €</b> 3.400 €	<b>03.10. - 10.10.2026</b> <b>2.380 €</b> 3.400 €
<b>10.10. - 17.10.2026</b> <b>2.380 €</b> 3.400 €	<b>17.10. - 24.10.2026</b> <b>2.380 €</b> 3.400 €	<b>25.10. - 31.12.2026</b> NOT AVAILABLE	



### WEBSITE

[www.plujeme.cz](http://www.plujeme.cz)



### E-MAIL

[info@plujeme.cz](mailto:info@plujeme.cz)



### PHONE

+420 720 755 085



### MOBILE

+420 777 170 276



### PLUJEME RÁDI S.R.O.

Dlouhá 730/35, 11000 Praha 1 – Staré Město, Czech Republic