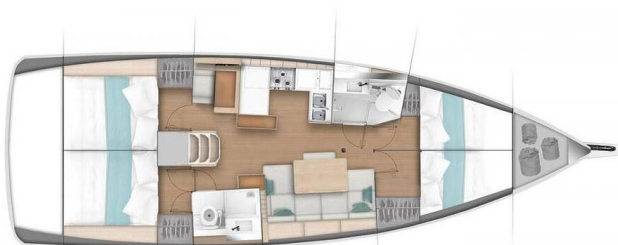


# SUN ODYSSEY 440

Roma (2021)

Sailing yacht Sun Odyssey 440 Roma, built in 2021 is anchored in the **Göcek, Aegean, Turkey**. It has **4 cabins**, can accommodate **8 people** and has **2 toilets**. Bed linen and kitchen equipment are included in the price.



## YACHT SPECIFICATIONS

Yacht Base

**Göcek, Turkey**

Yacht ID

**4679**

Brands

**Jeanneau**

Yacht name

**Roma**

Production year

**2021**

Length

**43 ft**

Cabins

**4**

Berths

**8**

Max Persons

**8**

WC

**2**

Engine

**1 x 45 HP**

Fuel tank

**200 l**

Plujeme not found or type unknown

### WEBSITE

Plujeme not found or type unknown  
[www.plujeme.cz](http://www.plujeme.cz)



### PHONE

+420 720 755 085



### MOBILE

+420 777 170 276

### E-MAIL

Plujeme not found or type unknown  
[info@plujeme.cz](mailto:info@plujeme.cz)



### PLUJEME RÁDI S.R.O.

Dlouhá 730/35, 11000 Praha 1 - Staré Město, Czech Republic

# STANDARD YACHT EQUIPMENT

Comfort	<b>Cockpit cushions</b>
Deck	<b>Anchor claw, Anchor swivel, Bimini top, Black ball, Black conus, Boat hook, Bosun's chair (Safe seat) (boatswain's chair), Cockpit full tent, Cockpit table with light, Cockpit/stern, outside shower, Dinghy, Dinghy (byboat) pump, Electric anchor windlass, Fenders, Gangway, Impeller, V-belt, oilfilter, Main anchor, Mooring ropes, Plastic bucket, Remote control for anchor winch with chain counter at helm, Repair box for dinghy, Round/globular fender, Spare anchor (Reserve, Auxiliary anchor), Spotlight / Headlights, Sprayhood, Spring line, Teak cockpit, Water hose</b>
Entertainment	<b>Outdoor speakers, Radio</b>
Galley	<b>Gas bottles, Hot water, Kitchen utensils (Galley equipment, cutlery), Refrigerator</b>
Interior	<b>Barometer, Clock, Electric fans in cabins, Lowerable salon table</b>
Navigation	<b>AIS, Autopilot, Bow thruster, GPS chart plotter - cockpit, Hand bearing compass, Harbour guides, Logge/Lot/Speed/Wind, Navigation (Nautical) charts and nautical guide, Navigation set, Parallel ruler, Radar reflector, Spyglass, Windex</b>
Safety	<b>Distress signals, Fire extinguisher, First aid kit, Flashlight, Fog horn, Life belts (Safety harness), Life buoy + Flashing light, Life jackets, Liferaft, Set of tools, VHF radio</b>
Sails	<b>Electric winch, Gennaker-device</b>
Yacht electrics	<b>Battery charger, Inverter, Shore connection 220 V, Solar panels, USB sockets</b>

Plujeme

Plujeme **WEBSITE**  
[www.plujeme.cz](http://www.plujeme.cz)



**PHONE**  
+420 720 755 085



**MOBILE**  
+420 777 170 276

Plujeme **E-MAIL**  
[info@plujeme.cz](mailto:info@plujeme.cz)



**PLUJEME RÁDI S.R.O.**  
Dlouhá 730/35, 11000 Praha 1 - Staré Město, Czech Republic

## SERVICES

SELECTED SERVICES	OBLIGATORY	PAYMENT TYPE	PRICE
<b>Charter package</b> (Payable at the base) <b>Season: 2026.</b> Transitlog for Turkish ports, bedding, towels (1 set/ person), toilet paper, salt, pepper, washing-up liquid, gas.	Yes	per booking	<b>300,00 €</b>
<b>Deposit insurance</b> (Payable at the base) <b>Season: 2026.</b>	No	per booking	<b>250,00 €</b>
<b>Early boarding/check-in</b> (Payable at the base) <b>Season: 2026.</b> Check-in: 1.00 pm	No	per booking	<b>150,00 €</b>
<b>Hostess</b> (Payable at the base) <b>Season: 2026.</b> + own cabin; external service provider, direct billing	No	per day + food	<b>170,00 €</b>
<b>Regatta charge</b> (Payable at the base) <b>Season: 2026.</b> on request	No	per booking	<b>400,00 €</b>
<b>Skipper</b> (Payable at the base) <b>Season: 2026.</b> + own cabin; external service provider	No	per day + food	<b>180,00 €</b>
<b>WI-FI Internet connection on boat</b> (Payable at the base) <b>Season: 2026.</b> 20 GB	No	per week	<b>60,00 €</b>

Plujeme

Plujeme **WEBSITE**  
www.plujeme.cz

Plujeme **E-MAIL**  
info@plujeme.cz



**PHONE**  
+420 720 755 085



**MOBILE**  
+420 777 170 276



**PLUJEME RÁDI S.R.O.**  
Dlouhá 730/35, 11000 Praha 1 – Staré Město, Czech Republic

## ADDITIONAL EXTRAS

EXTRA	OBLIGATORY	PAYMENT TYPE	PRICE
<b>Extra bedlinen</b> (Payable at the base) <b>Season: 2026.</b> 1 set/ person is included in the charter package - Payable at the base	No	per set	<b>10,00 €</b>
<b>Extra towels</b> (Payable at the base) <b>Season: 2026.</b> 1 set/ person is included in the charter package - Payable at the base	No	per set	<b>10,00 €</b>
<b>Flexible bulkhead system</b> (Payable at the base) <b>Season: 2026.</b> Payable at the base	No	per booking	<b>150,00 €</b>
<b>Gennaker</b> (Payable at the base) <b>Season: 2026.</b> + € 2.000 deposit on request - Payable at the base	No	per week	<b>250,00 €</b>
<b>Outboard engine</b> (Payable at the base) <b>Season: 2026.</b> 1 week 75 EUR first week/ 25 EUR following week - Payable at the base	No	per booking	<b>75,00 €</b>
<b>Railing net (Safety net)</b> (Payable at the base) <b>Season: 2026.</b> not available for all yachts - Payable at the base	No	per booking	<b>150,00 €</b>
<b>Stand up paddle (SUP)</b> (Payable at the base) <b>Season: 2026.</b> Payable at the base	No	per week	<b>100,00 €</b>

Plujeme

Plujeme **WEBSITE**  
www.plujeme.cz

Plujeme **E-MAIL**  
info@plujeme.cz



**PHONE**  
+420 720 755 085



**MOBILE**  
+420 777 170 276



**PLUJEME RÁDI S.R.O.**  
Dlouhá 730/35, 11000 Praha 1 - Staré Město, Czech Republic

## PRICE AND AVAILABILITY

<b>13.06. - 20.06.2026</b> NOT AVAILABLE	<b>20.06. - 27.06.2026</b> <b>2.345 €</b> 3.350 €	<b>27.06. - 04.07.2026</b> <b>2.345 €</b> 3.350 €	<b>04.07. - 11.07.2026</b> NOT AVAILABLE
<b>11.07. - 18.07.2026</b> <b>2.779 €</b> 3.970 €	<b>18.07. - 25.07.2026</b> <b>2.779 €</b> 3.970 €	<b>25.07. - 01.08.2026</b> NOT AVAILABLE	<b>01.08. - 08.08.2026</b> <b>2.345 €</b> 3.350 €
<b>08.08. - 15.08.2026</b> NOT AVAILABLE	<b>15.08. - 22.08.2026</b> <b>2.345 €</b> 3.350 €	<b>22.08. - 29.08.2026</b> NOT AVAILABLE	<b>29.08. - 05.09.2026</b> <b>2.730 €</b> 3.900 €
<b>05.09. - 12.09.2026</b> NOT AVAILABLE	<b>12.09. - 19.09.2026</b> NOT AVAILABLE	<b>19.09. - 26.09.2026</b> <b>3.596 €</b> 4.230 €	<b>26.09. - 03.10.2026</b> NOT AVAILABLE
<b>03.10. - 10.10.2026</b> NOT AVAILABLE	<b>10.10. - 21.10.2026</b> NOT AVAILABLE	<b>24.10. - 31.10.2026</b> <b>3.528 €</b> 4.150 €	<b>31.10. - 07.11.2026</b> <b>3.188 €</b> 3.750 €
<b>07.11. - 14.11.2026</b> <b>1.760 €</b> 2.070 €	<b>14.11. - 21.11.2026</b> <b>1.760 €</b> 2.070 €	<b>21.11. - 28.11.2026</b> <b>1.760 €</b> 2.070 €	<b>28.11. - 05.12.2026</b> <b>1.760 €</b> 2.070 €
<b>06.12. - 31.12.2026</b> NOT AVAILABLE			


Plujeme

Plujeme **WEBSITE**  
[www.plujeme.cz](http://www.plujeme.cz)

Plujeme **E-MAIL**  
[info@plujeme.cz](mailto:info@plujeme.cz)

 **PHONE**  
+420 720 755 085

 **MOBILE**  
+420 777 170 276

 **PLUJEME RÁDI S.R.O.**  
Dlouhá 730/35, 11000 Praha 1 – Staré Město, Czech Republic