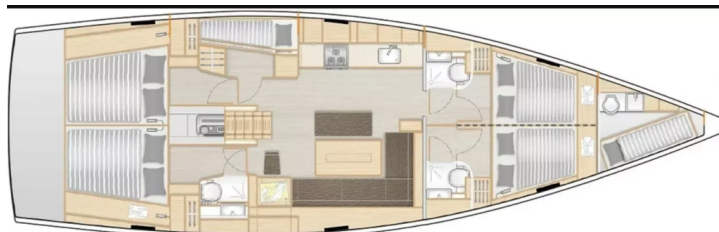


# HANSE 508

Big Blue (2020)

Sailing yacht Hanse 508 Big Blue, built in 2020 is anchored in the Athens, Alimos marina, Athens area/Saronic/Peloponese, Greece. It has 5 + 1 cabins, can accommodate 10 + 2 people and has 3 + 1 toilets. Bed linen and kitchen equipment are included in the price.



## YACHT SPECIFICATIONS

Yacht Base

**Athens, Alimos marina, Greece**

Yacht ID

**4531**

Brands

**Hanse Yachts**

Yacht name

**Big Blue**

Production year

**2020**

Length

**51 ft**

Cabins

**5 + 1**

Berths

**10 + 2**

Max Persons

**12**

WC

**3 + 1**

Engine

**1 x 80 HP**

Fuel tank

**280 l**



**WEBSITE**

[www.plujeme.cz](http://www.plujeme.cz)



**PHONE**

+420 720 755 085



**MOBILE**

+420 777 170 276



**E-MAIL**

[info@plujeme.cz](mailto:info@plujeme.cz)



**PLUJEME RÁDI S.R.O.**

Dlouhá 730/35, 11000 Praha 1 – Staré Město, Czech Republic

## STANDARD YACHT EQUIPMENT

Comfort	<b>Blankets, Pillows, Sheets, Towels</b>
Deck	<b>Bimini top, Black ball, Bosun's chair (Safe seat) (boatswain's chair), Dinghy with outboard engine, Sprayhood</b>
Entertainment	<b>Radio CD player</b>
Galley	<b>Kitchen utensils (Galley equipment, cutlery), Oven, Refrigerator, Stove</b>
Interior	<b>Barometer, Clock, Convertible table in salon, Electric toilet</b>
Navigation	<b>Autopilot, Binoculars, Bow thruster, Compass, Divider, nautic chart, Echosounder/Depthsounder, GPS, GPS chart plotter, Hand bearing compass, Parallel ruler, Pilot book, Radar reflector, Speedometer (Speed log), Wind instrument/Anemometer</b>
Safety	<b>Distress flare box, Emergency tiller, Fire extinguisher, First aid kit, Floating light, Fog horn, Horseshoe lifebuoy, Life belts (Safety harness), Life jackets, Liferaft, Repair kit, Set of tools, Torch, VHF radio</b>
Yacht electrics	<b>Air Conditioning, Batteries, Shore power connection</b>



#### WEBSITE

[www.plujeme.cz](http://www.plujeme.cz)



#### E-MAIL

[info@plujeme.cz](mailto:info@plujeme.cz)



#### PHONE

+420 720 755 085



#### MOBILE

+420 777 170 276



#### PLUJEME RÁDI S.R.O.

Dlouhá 730/35, 11000 Praha 1 – Staré Město, Czech Republic

## SERVICES

SELECTED SERVICES	OBLIGATORY	PAYMENT TYPE	PRICE
<p><b>Starter pack</b> (Payable at the base)</p> <p><b>Season: 2026.</b> End cleaning, 1x Cooking gas, Water, Linen 1 set (2 sheets, 1 pillow case, 1 bath towel, 1 face towel) per person, Harbour fees for the first &amp; last night. * If there is pet on board, then double cleaning will be applied.; Payable on the spot with cash 🛍️ bag with Greek Local Products is offered to all of our charters as a welcome gift.</p>	Yes	per booking	<b>350,00 €</b>
<p><b>Cook</b> (Payable at the base)</p> <p><b>Season: 2026.</b> (Crew require their own cabin); Only responsible for daily cooking / provisioning and cleaning relevant to kitchen area; Payable on the spot with cash; Crew Cancellation Policy A Down payment of 25% is required upon confirmation, and the rest are payable on the spot with cash. Crew cancelled 4 weeks prior to embarkation will have 25% of total crew fee applicable. Crew cancelled less than 14 days prior to embarkation will have 100% of the total crew fee applicable.</p>	No	per day + food	<b>200,00 €</b>
<p><b>Crew change</b> (Payable at the base)</p> <p><b>Season: 2026.</b> Payable on the spot with cash Applicable only at one of our bases: Included : Formalities (contract, crew list, etc.) and one day of mooring fees. Not included: Yachts cleaning and laundry.</p>	No	per booking	<b>150,00 €</b>
<p><b>Early boarding/check-in</b> (Payable at the base)</p> <p><b>Season: 2026.</b> Access to the yacht by 14:00 In the event of delay beyond our control refunds will be made.; Payable on the spot with cash</p>	No	per booking	<b>200,00 €</b>
<p><b>Hostess</b> (Payable at the base)</p> <p><b>Season: 2026.</b> *crew require their own cabin; Payable on the spot with cash Crew Cancellation Policy A Down payment of 25% is required upon confirmation, and the rest are payable on the spot with cash. Crew cancelled 4 weeks prior to embarkation will have 25% of total crew fee applicable. Crew cancelled less than 14 days prior to embarkation will have 100% of the total crew fee applicable.</p>	No	per day + food	<b>190,00 €</b>
<p><b>Internet pack</b> (Payable at the base)</p> <p><b>Season: 2026.</b> +20 € per week after the 1st (WiFi hotspot for up to 5 devices and unlimited usage of internet); Payable on the spot with cash</p>	No	per booking	<b>70,00 €</b>
<p><b>Linen Pack</b> (Payable at the base)</p> <p><b>Season: 2026.</b> 1 Extra set of linen (2 sheets, 1 pillow case, 1 bath towel, 1 face towel); Payable on the spot with cash</p>	No	per set	<b>10,00 €</b>

<p><b>Non refundable deposit/ insurance</b> (Payable at the base)</p> <p><b>Season: 2026.</b> + refundable deposit 700 EUR; non refundable payable on spot in cash and refundable payable by credit card on spot * Non-Refundable Deposit is mandatory on all skippered charters.</p>	No	per booking	<b>350,00 €</b>
<p><b>Skipper</b> (Payable at the base)</p> <p><b>Season: 2026.</b> (Crew require their own cabin); Payable on the spot with cash Crew Cancellation Policy A Down payment of 25% is required upon confirmation, and the rest are payable on the spot with cash. Crew cancelled 4 weeks prior to embarkation will have 25% of total crew fee applicable. Crew cancelled less than 14 days prior to embarkation will have 100% of the total crew fee applicable. Damage waiver is obligatory for skippered charters.</p>	No	per day + food	<b>210,00 €</b>
<p><b>Welcome package</b> (Payable at the base)</p> <p><b>Season: 2026.</b> Toilet and Kitchen rolls, matches, Plastic bags for rubbish, 1 Dish Sponge, 1 Dish, Soap, Sugar, Salt and Pepper, Coffee, 6 bottles of Water, 1 bottle of wine, 6 cans of Coke, 6 cans of Beer, Milk, Orange Juice; Payable on the spot with cash</p>	No	per booking	<b>70,00 €</b>



**WEBSITE**  
www.plujeme.cz



**PHONE**  
+420 720 755 085



**MOBILE**  
+420 777 170 276



**E-MAIL**  
info@plujeme.cz



**PLUJEME RÁDI S.R.O.**  
Dlouhá 730/35, 11000 Praha 1 – Staré Město, Czech Republic

## ADDITIONAL EXTRAS

EXTRA	OBLIGATORY	PAYMENT TYPE	PRICE
<b>Automatic Inflatable Life Jacket</b> (Payable at the base) <b>Season: 2026.</b> Payable on the spot with cash - Payable at the base	No	per piece	<b>30,00 €</b>
<b>Beach towel</b> (Payable at the base) <b>Season: 2026.</b> Payable on the spot with cash - Payable at the base	No	per piece	<b>5,00 €</b>
<b>Bed linen</b> (Payable at the base) <b>Season: 2026.</b> Payable on the spot with cash - Payable at the base	No	per set	<b>10,00 €</b>
<b>Blister</b> (Payable at the base) <b>Season: 2026.</b> + additional security deposit 500EUR; Payable on the spot with cash - Payable at the base	No	per week	<b>200,00 €</b>
<b>Electric outboard engine</b> (Payable at the base) <b>Season: 2026.</b> 3 HP; Subject to availability, payable on the spot with cash - Payable at the base	No	per week	<b>110,00 €</b>
<b>Grill/Barbecue/Plancha</b> (Payable at the base) <b>Season: 2026.</b> Gas - Payable at the base	No	per week	<b>100,00 €</b>
<b>Kayak</b> (Payable at the base) <b>Season: 2026.</b> Payable on the spot with cash - Payable at the base	No	per week	<b>130,00 €</b>
<b>Life jacket (children)</b> (Payable at the base) <b>Season: 2026.</b> for children under 25 kg, one included in every yacht free of charge; Payable on the spot with cash - Payable at the base	No	per week/ person	<b>20,00 €</b>
<b>Railing net (Safety net)</b> (Payable at the base) <b>Season: 2026.</b> 200 € for yachts up to 46 ft., 300 € per week for yachts above 46ft & catamarans (Half price if the railing net is supplied uninstalled). Payable on the spot with cash - Payable at the base	No	per week	<b>300,00 €</b>
<b>SEA-D00 underwater scooter</b> (Payable at the base) <b>Season: 2026.</b> Payable on the spot with cash - Payable at the base	No	per week	<b>150,00 €</b>
<b>Snorkeling equipment</b> (Payable at the base) <b>Season: 2026.</b> The set contains mask, inhalator and flippers; Payable on the spot with cash - Payable at the base	No	per week/ person	<b>10,00 €</b>

**Stand up paddle (SUP)** (Payable at the base)

No

per week

**130,00 €**

**Season: 2026.** Payable on the spot with cash - Payable at the base



**WEBSITE**

[www.plujeme.cz](http://www.plujeme.cz)



**E-MAIL**

[info@plujeme.cz](mailto:info@plujeme.cz)



**PHONE**

+420 720 755 085



**MOBILE**

+420 777 170 276



**PLUJEME RÁDI S.R.O.**

Dlouhá 730/35, 11000 Praha 1 – Staré Město, Czech Republic

## PRICE AND AVAILABILITY

<b>13.06. - 20.06.2026</b> NOT AVAILABLE	<b>20.06. - 27.06.2026</b> NOT AVAILABLE	<b>27.06. - 04.07.2026</b> NOT AVAILABLE	<b>04.07. - 11.07.2026</b> NOT AVAILABLE
<b>11.07. - 25.07.2026</b> NOT AVAILABLE	<b>25.07. - 08.08.2026</b> NOT AVAILABLE	<b>08.08. - 15.08.2026</b> NOT AVAILABLE	<b>15.08. - 05.09.2026</b> NOT AVAILABLE
<b>05.09. - 03.10.2026</b> NOT AVAILABLE	<b>03.10. - 17.10.2026</b> NOT AVAILABLE	<b>17.10. - 24.10.2026</b> NOT AVAILABLE	<b>24.10. - 31.10.2026</b> NOT AVAILABLE
<b>31.10. - 07.11.2026</b> <b>2.980 €</b> 3.700 €	<b>07.11. - 14.11.2026</b> <b>2.980 €</b> 3.700 €	<b>14.11. - 21.11.2026</b> <b>2.980 €</b> 3.700 €	<b>21.11. - 28.11.2026</b> <b>2.980 €</b> 3.700 €
<b>28.11. - 03.04.2027</b> NOT AVAILABLE			



**WEBSITE**  
[www.plujeme.cz](http://www.plujeme.cz)



**E-MAIL**  
[info@plujeme.cz](mailto:info@plujeme.cz)



**PHONE**  
+420 720 755 085



**MOBILE**  
+420 777 170 276



**PLUJEME RÁDI S.R.O.**  
Dlouhá 730/35, 11000 Praha 1 – Staré Město, Czech Republic

## PRICE AND AVAILABILITY

03.04. - 10.04.2027 3.700 €	10.04. - 17.04.2027 3.700 €	17.04. - 24.04.2027 4.700 €	24.04. - 01.05.2027 4.700 €
01.05. - 08.05.2027 4.700 €	08.05. - 15.05.2027 4.700 €	15.05. - 22.05.2027 5.800 €	22.05. - 29.05.2027 5.800 €
29.05. - 05.06.2027 5.800 €	05.06. - 12.06.2027 5.800 €	12.06. - 19.06.2027 6.800 €	19.06. - 26.06.2027 6.800 €
26.06. - 03.07.2027 6.800 €	03.07. - 10.07.2027 6.800 €	10.07. - 17.07.2027 6.800 €	17.07. - 24.07.2027 6.800 €
24.07. - 31.07.2027 8.200 €	31.07. - 07.08.2027 8.200 €	07.08. - 14.08.2027 8.200 €	14.08. - 21.08.2027 6.800 €
21.08. - 28.08.2027 6.800 €	28.08. - 04.09.2027 6.800 €	04.09. - 11.09.2027 6.800 €	11.09. - 18.09.2027 5.800 €
18.09. - 25.09.2027 5.800 €	25.09. - 02.10.2027 4.700 €		



### WEBSITE

[www.plujeme.cz](http://www.plujeme.cz)



### E-MAIL

[info@plujeme.cz](mailto:info@plujeme.cz)



### PHONE

+420 720 755 085



### MOBILE

+420 777 170 276



### PLUJEME RÁDI S.R.O.

Dlouhá 730/35, 11000 Praha 1 – Staré Město, Czech Republic

## PRICE AND AVAILABILITY

02.10. - 09.10.2027 3.700 €	09.10. - 16.10.2027 3.700 €	16.10. - 23.10.2027 3.700 €	23.10. - 30.10.2027 3.700 €
30.10. - 06.11.2027 3.700 €	06.11. - 13.11.2027 3.700 €	13.11. - 20.11.2027 3.700 €	20.11. - 27.11.2027 3.700 €
27.11. - 04.12.2027 3.700 €	04.12. - 11.12.2027 3.700 €	11.12. - 18.12.2027 3.700 €	18.12. - 25.12.2027 3.700 €



### WEBSITE

[www.plujeme.cz](http://www.plujeme.cz)



### E-MAIL

[info@plujeme.cz](mailto:info@plujeme.cz)



### PHONE

+420 720 755 085



### MOBILE

+420 777 170 276



### PLUJEME RÁDI S.R.O.

Dlouhá 730/35, 11000 Praha 1 – Staré Město, Czech Republic