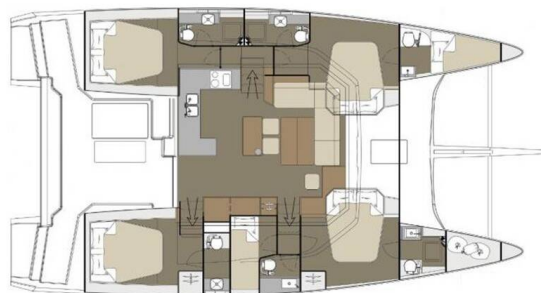


DUFOUR 48 CATAMARAN

Bahia Serena (2019)

Catamaran Dufour 48 Catamaran Bahia Serena, built in 2019 is anchored in the **Marina Kremik, Primosten, Šibenik region, Croatia**. It has **5 + 1 cabins**, can accommodate **9 + 1 + 1 people** and has **5 + 1 toilets**. Bed linen and kitchen equipment are included in the price.



YACHT SPECIFICATIONS

Yacht Base

Marina Kremik, Primosten, Croatia

Yacht ID

3881

Brands

Dufour

Yacht name

Bahia Serena

Production year

2019

Length

48 ft

Cabins

5 + 1

Berths

9 + 1 + 1

Max Persons

11

WC

5 + 1

Engine

2 x 60 HP

Fuel tank

900 l



WEBSITE

www.plujeme.cz



PHONE

+420 720 755 085



MOBILE

+420 777 170 276



E-MAIL

info@plujeme.cz



PLUJEME RÁDI S.R.O.

Dlouhá 730/35, 11000 Praha 1 – Staré Město, Czech Republic

STANDARD YACHT EQUIPMENT

Comfort	Bed linen, Cockpit cushions, Towels
Deck	Anchor line, Anchor swivel, Bathing platform, Bimini top, Black ball, Black conus, Boat hook, Bosun's chair (Safe seat) (boatswain's chair), Canister for water, Chairs, Cockpit table with light, Cockpit/stern, outside shower, Dinghy with outboard engine, Electric anchor windlass, Fenders, Gangway, Hawser, Jerry cans for diesel, Main anchor, Mooring ropes, Plastic bucket, Remote control for anchor winch with chain counter at helm, Round/globular fender, Spare anchor (Reserve, Auxiliary anchor), Spotlight / Headlights, Sprayhood, Spring line, Teak cockpit, Water hose
Entertainment	Outdoor speakers, Radio CD mp3 player, Stand up paddle (SUP) - FREE, Wi-Fi Internet
Galley	Coffee machine, Gas bottles, Hot water, Kitchen utensils (Galley equipment, cutlery), Refrigerator
Interior	Barometer, Clock, Electric fans, Electric toilet, Lowerable salon table
Navigation	AIS, Autopilot, Binoculars with integrated compass, Composite steering wheels, GPS chart plotter, GPS chart plotter - cockpit, Hand bearing compass, Harbour guides, Logge/Lot/Speed/Wind, Navigation (Nautical) charts and nautical guide, Navigation set, Radar reflector, Tridata, Windex
Safety	Automatic Inflatable Life Jacket, Distress signals, EPIRB-Distress radio beacons, Fire extinguisher, First aid kit, Fog horn, Horseshoe lifebuoy, Life belts (Safety harness), Liferaft, VHF radio
Sails	Electric winch, Gennaker-device, Lazy bag, Lazy jacks
Yacht electrics	Air Conditioning, Battery charger, Generator, Inverter, Shore connection 220 V, Solar panels



WEBSITE

www.plujeme.cz



PHONE

+420 720 755 085



MOBILE

+420 777 170 276



E-MAIL

info@plujeme.cz



PLUJEME RÁDI S.R.O.

Dlouhá 730/35, 11000 Praha 1 - Staré Město, Czech Republic

SERVICES

SELECTED SERVICES	OBLIGATORY	PAYMENT TYPE	PRICE
Comfort Pack (Payable at the base) Season: 2026. includes bed linen and 4 towels (incl. beach towel) per person, coffee pack (50 capsules), dinghy / outboard engine 20 HP, WiFi pack 50 GB, basic bathroom amenities, final cleaning	Yes	per booking	650,00 €
APA (Advance Provisioning Allowance) (Payable now) Season: 2026. Paid in advance; mandatory with Hostess/cook onboard	No	per booking	3.000,00 €
Cook (Payable at the base) Season: 2026.	No	per day	270,00 €
Early Check in (Payable at the base) Season: 2026. 12:30h – 13:30h	No	per booking	300,00 €
Hostess (Payable at the base) Season: 2026.	No	per day	200,00 €
One way fee (Payable at the base) Season: 2026. + port fees, on request	No	per booking	900,00 €
Pet on board (Payable at the base) Season: 2026.	No	per booking	150,00 €
Skipper (Payable at the base) Season: 2026.	No	per day	250,00 €



WEBSITE

www.plujeme.cz



E-MAIL

info@plujeme.cz



PHONE

+420 720 755 085



MOBILE

+420 777 170 276



PLUJEME RÁDI S.R.O.

Dlouhá 730/35, 11000 Praha 1 – Staré Město, Czech Republic

ADDITIONAL EXTRAS

EXTRA	OBLIGATORY	PAYMENT TYPE	PRICE
Code Zero (Payable at the base) Season: 2026. Payable at the base	No	per week	300,00 €
Coffee capsules (Payable at the base) Season: 2026. Extra 50 capsules - Payable at the base	No	per set	35,00 €
Extra bedlinen and towels (Payable at the base) Season: 2026. Payable at the base	No	per set	150,00 €
Gennaker (Payable at the base) Season: 2026. Payable at the base	No	per week	300,00 €
Kayak single (Payable at the base) Season: 2026. Payable at the base	No	per week	150,00 €
Kayak tandem (Payable at the base) Season: 2026. Payable at the base	No	per week	200,00 €
RIB (Payable at the base) Season: 2026. RIB 3,3m (HIGHFIELD) + 30HP engine - Payable at the base	No	per week	500,00 €
RIB (Payable at the base) Season: 2026. RIB 4.6 (HIGHFIELD) + 50HP engine - Payable at the base	No	per week	1.000,00 €
RIB (Payable at the base) Season: 2026. RIB 5.6m (HIGHFIELD) + 115HP engine - Payable at the base	No	per week	1.350,00 €
Stand up paddle (SUP) (Payable at the base) Season: 2026. Standard SUP - Payable at the base	No	per booking	120,00 €



WEBSITE

www.plujeme.cz



PHONE

+420 720 755 085



MOBILE

+420 777 170 276



E-MAIL

info@plujeme.cz



PLUJEME RÁDI S.R.O.

Dlouhá 730/35, 11000 Praha 1 – Staré Město, Czech Republic

PRICE AND AVAILABILITY

25.04. - 02.05.2026 3.750 € 5.000 €	02.05. - 09.05.2026 NOT AVAILABLE	09.05. - 11.07.2026 NOT AVAILABLE	11.07. - 18.07.2026 NOT AVAILABLE
18.07. - 25.07.2026 NOT AVAILABLE	25.07. - 12.09.2026 NOT AVAILABLE	12.09. - 19.09.2026 NOT AVAILABLE	19.09. - 26.09.2026 NOT AVAILABLE
26.09. - 03.10.2026 NOT AVAILABLE	03.10. - 28.11.2026 NOT AVAILABLE	28.11. - 05.12.2026 4.216 € 4.960 €	



WEBSITE

www.plujeme.cz



E-MAIL

info@plujeme.cz



PHONE

+420 720 755 085



MOBILE

+420 777 170 276



PLUJEME RÁDI S.R.O.

Dlouhá 730/35, 11000 Praha 1 – Staré Město, Czech Republic

PRICE AND AVAILABILITY

05.12. - 12.12.2026

4.216 € 4.960 €

12.12. - 19.12.2026

4.216 € 4.960 €

19.12. - 26.12.2026

4.216 € 4.960 €



WEBSITE

www.plujeme.cz



E-MAIL

info@plujeme.cz



PHONE

+420 720 755 085



MOBILE

+420 777 170 276



PLUJEME RÁDI S.R.O.

Dlouhá 730/35, 11000 Praha 1 – Staré Město, Czech Republic