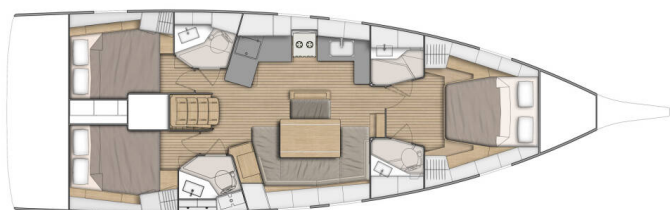


# OCEANIS 46.1

Air 2 (2020)

Sailing yacht Oceanis 46.1 Air 2, built in 2020 is anchored in the Trogir, Marina Trogir (ex.SCT), Split region, Croatia. It has 3 cabins, can accommodate 6 + 2 people and has 3 toilets. Bed linen and kitchen equipment are included in the price.



## YACHT SPECIFICATIONS

Yacht Base

**Trogir, Marina Trogir (ex.SCT),  
Croatia**

Yacht ID

**2479**

Brands

**Beneteau**

Yacht name

**Air 2**

Production year

**2020**

Length

**48 ft**

Cabins

**3**

Berths

**6 + 2**

Max Persons

**8**

WC

**3**

Engine

**1 x 57 HP**

Fuel tank

**200 l**



**WEBSITE**

[www.plujeme.cz](http://www.plujeme.cz)



**PHONE**

+420 720 755 085



**MOBILE**

+420 777 170 276



**E-MAIL**

[info@plujeme.cz](mailto:info@plujeme.cz)



**PLUJEME RÁDI S.R.O.**

Dlouhá 730/35, 11000 Praha 1 – Staré Město, Czech Republic

## STANDARD YACHT EQUIPMENT

Comfort	<b>Bed linen, Cockpit cushions, Mosquito nets, Pillows</b>
Deck	<b>Anchor Delta, Anchor Jambo, Bathing platform, Bilge pump - Mechanic, Bimini top, Boat hook, Cockpit grill, Cockpit table, Cockpit/stern, outside shower, Dinghy, Electric anchor windlass, Fenders, Gangway, Main anchor, Mooring ropes, Sprayhood, Teak seats in cockpit, Water hose, Winch handles</b>
Entertainment	<b>Fusion radio, Outdoor speakers, Wi-Fi Internet</b>
Galley	<b>Electrical kettle, Gas bottles, Gas cookers, Hot water, Ice box, Kitchen utensils (Galley equipment, cutlery), Moka pot, Oven, Refrigerator, Sink</b>
Interior	<b>Barometer, Clock, Duvet cover, Electric fans in cabins, Electric toilet</b>
Navigation	<b>Autopilot, Binoculars, Bow thruster, Compass, Divider, nautic chart, GPS chart plotter - cockpit, Hand bearing compass, Navigation (Nautical) charts and nautical guide, Navigation set, Radar reflector, Tridata, Wind instrument/Anemometer</b>
Safety	<b>Black Water Tank, Distress flare box, Emergency tiller, Fire extinguisher, First aid kit, Flashlight, Fog horn, Life belts (Safety harness), Life buoy + Flashing light, Life jackets, Liferaft, Repair kit, Set of tools, VHF radio</b>
Sails	<b>Winch</b>
Yacht electrics	<b>220V socket, Air Conditioning, Battery charger, Bilge pump - Electric, Heating, Pump, Service batteries, Shore connection 220 V, Shore power cable, Solar panels</b>



**WEBSITE**

[www.plujeme.cz](http://www.plujeme.cz)



**PHONE**

+420 720 755 085



**MOBILE**

+420 777 170 276



**E-MAIL**

[info@plujeme.cz](mailto:info@plujeme.cz)



**PLUJEME RÁDI S.R.O.**

Dlouhá 730/35, 11000 Praha 1 – Staré Město, Czech Republic

## SERVICES

SELECTED SERVICES	OBLIGATORY	PAYMENT TYPE	PRICE
<b>Charter package</b> (Payable at the base) <b>Season: 2026 - Angelina Yachtcharter.</b> Charter package includes final cleaning, gas, check-in and out services, package for toilets (toilet paper and soap /per each toilet) and kitchen (1 kitchen paper towels, a sponge and a cleaning cloth, a small package of dish detergent, 1 waste bag, 2 kitchen towels, 2x 1l bottle of water), bed linen/bath towels (2 sets per cabin - do not include saloon and skipper cabin).	Yes	per booking	<b>330,00 €</b>
<b>WiFi GRATIS ON BOAT</b> (Payable now) <b>Season: 2026 - Angelina Yachtcharter.</b> GRATIS	Yes	per booking	<b>0,00 €</b>
<b>Assisted Sailing</b> (Payable at the base) <b>Season: 2026 - Angelina Yachtcharter.</b> Valovie - remote sailing assistance; Our skipper will help and assist you remotely during your charter, and provide you advices when it comes to berths, restaurant recommendations, weather forecasts etc.	No	per booking	<b>270,00 €</b>
<b>Deposit insurance</b> (Payable at the base) <b>Season: 2026 - Angelina Yachtcharter.</b> + refundable deposit 200,00 EUR	No	per booking	<b>240,00 €</b>
<b>Pet on board</b> (Payable at the base) <b>Season: 2026 - Angelina Yachtcharter.</b> maximum 2 pets allowed	No	per booking	<b>200,00 €</b>

**WEBSITE**[www.plujeme.cz](http://www.plujeme.cz)**E-MAIL**[info@plujeme.cz](mailto:info@plujeme.cz)**PHONE**

+420 720 755 085

**MOBILE**

+420 777 170 276

**PLUJEME RÁDI S.R.O.**

Dlouhá 730/35, 11000 Praha 1 – Staré Město, Czech Republic

## ADDITIONAL EXTRAS

EXTRA	OBLIGATORY	PAYMENT TYPE	PRICE
<b>Beach towel</b> (Payable at the base) <b>Season: 2026 - Angelina Yachtcharter.</b> Payable at the base	No	per piece	<b>10,00 €</b>
<b>Outboard engine 2,3 HP</b> (Payable at the base) <b>Season: 2026 - Angelina Yachtcharter.</b> Special promotion, free of charge for charter periods until 29.08.2026. and from 03.10.2026. - Payable at the base	No	per booking	<b>0,00 €</b>
<b>Outboard engine 2,3 HP</b> (Payable at the base) <b>Season: 2026 - Angelina Yachtcharter.</b> Special promotion, free of charge for charter periods until 29.08.2026. and from 03.10.2026. - Payable at the base	No	per booking	<b>0,00 €</b>
<b>Outboard engine 2,3 HP</b> (Payable at the base) <b>Season: 2026 - Angelina Yachtcharter.</b> Payable at the base	No	per week	<b>110,00 €</b>
<b>Stand up paddle (SUP)</b> (Payable at the base) <b>Season: 2026 - Angelina Yachtcharter.</b> *additional deposit 200 EUR with deposit insurance, order in advance due to limited quantity of equipment - Payable at the base	No	per week	<b>100,00 €</b>
<b>Towels</b> (Payable at the base) <b>Season: 2026 - Angelina Yachtcharter.</b> Payable at the base	No	per set	<b>10,00 €</b>



**WEBSITE**

[www.plujeme.cz](http://www.plujeme.cz)



**PHONE**

+420 720 755 085



**MOBILE**

+420 777 170 276



**E-MAIL**

[info@plujeme.cz](mailto:info@plujeme.cz)



**PLUJEME RÁDI S.R.O.**

Dlouhá 730/35, 11000 Praha 1 – Staré Město, Czech Republic

## PRICE AND AVAILABILITY

<b>25.04. - 02.05.2026</b> <b>1.320 €</b> 1.650 €	<b>02.05. - 09.05.2026</b> <b>1.320 €</b> 1.650 €	<b>09.05. - 23.05.2026</b> NOT AVAILABLE	<b>23.05. - 06.06.2026</b> NOT AVAILABLE
<b>06.06. - 13.06.2026</b> NOT AVAILABLE	<b>13.06. - 27.06.2026</b> NOT AVAILABLE	<b>27.06. - 04.07.2026</b> <b>3.018 €</b> 3.550 €	<b>04.07. - 11.07.2026</b> <b>3.088 €</b> 3.250 €
<b>11.07. - 18.07.2026</b> NOT AVAILABLE	<b>18.07. - 25.07.2026</b> NOT AVAILABLE	<b>25.07. - 01.08.2026</b> NOT AVAILABLE	<b>01.08. - 15.08.2026</b> NOT AVAILABLE
<b>15.08. - 22.08.2026</b> NOT AVAILABLE	<b>22.08. - 29.08.2026</b> NOT AVAILABLE	<b>29.08. - 05.09.2026</b> ON OPTION	<b>05.09. - 19.09.2026</b> NOT AVAILABLE
<b>19.09. - 26.09.2026</b> NOT AVAILABLE	<b>26.09. - 03.10.2026</b> <b>1.995 €</b> 2.100 €	<b>03.10. - 10.10.2026</b> <b>1.500 €</b> 2.000 €	<b>10.10. - 17.10.2026</b> <b>1.400 €</b> 1.750 €
<b>17.10. - 24.10.2026</b> ON OPTION	<b>24.10. - 31.10.2026</b> ON OPTION	<b>31.10. - 07.11.2026</b> <b>1.268 €</b> 1.950 €	<b>07.11. - 14.11.2026</b> <b>1.268 €</b> 1.950 €
<b>15.11. - 31.12.2026</b> NOT AVAILABLE			



**WEBSITE**

[www.plujeme.cz](http://www.plujeme.cz)



**E-MAIL**

[info@plujeme.cz](mailto:info@plujeme.cz)



**PHONE**

+420 720 755 085



**MOBILE**

+420 777 170 276



**PLUJEME RÁDI S.R.O.**

Dlouhá 730/35, 11000 Praha 1 – Staré Město, Czech Republic

## PRICE AND AVAILABILITY

01.01. - 05.03.2027

NOT AVAILABLE



### WEBSITE

[www.plujeme.cz](http://www.plujeme.cz)



### E-MAIL

[info@plujeme.cz](mailto:info@plujeme.cz)



### PHONE

+420 720 755 085



### MOBILE

+420 777 170 276



### PLUJEME RÁDI S.R.O.

Dlouhá 730/35, 11000 Praha 1 – Staré Město, Czech Republic

## PRICE AND AVAILABILITY

07.11. - 31.12.2027

NOT AVAILABLE



### WEBSITE

[www.plujeme.cz](http://www.plujeme.cz)



### E-MAIL

[info@plujeme.cz](mailto:info@plujeme.cz)



### PHONE

+420 720 755 085



### MOBILE

+420 777 170 276



### PLUJEME RÁDI S.R.O.

Dlouhá 730/35, 11000 Praha 1 – Staré Město, Czech Republic