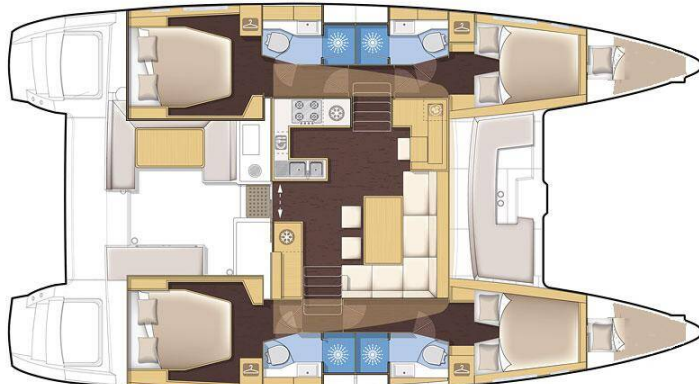


# LAGOON 450 F

Mary One (2019)

Catamaran Lagoon 450 F Mary One, built in 2019 is anchored in the Palairos, Ionian Islands, Greece. It has 4 + 2 cabins, can accommodate 8 + 2 + 2 people and has 4 + 1 toilets. Bed linen and kitchen equipment are included in the price.



version 4 cabins / 4 cabins version

## YACHT SPECIFICATIONS

Yacht Base

**Palairos, Greece**

Yacht ID

**1492**

Brands

**Lagoon**

Yacht name

**Mary One**

Production year

**2019**

Length

**46 ft**

Cabins

**4 + 2**

Berths

**8 + 2 + 2**

Max Persons

**12**

WC

**4 + 1**

Engine

**2 x 57 HP**

Fuel tank

**1050 l**



**WEBSITE**

[www.plujeme.cz](http://www.plujeme.cz)



**PHONE**

+420 720 755 085



**MOBILE**

+420 777 170 276



**E-MAIL**

[info@plujeme.cz](mailto:info@plujeme.cz)



**PLUJEME RÁDI S.R.O.**

Dlouhá 730/35, 11000 Praha 1 – Staré Město, Czech Republic

## STANDARD YACHT EQUIPMENT

Comfort	<b>Blankets, Cockpit cushions, Pillows, Sheets, Towels</b>
Deck	<b>Anchor with chain, Bilge pump – Mechanic, Bimini top, Black ball, Boat hook, Camera, Canister for water, Cockpit table, Dinghy, Dinghy (byboat) pump, Electric anchor windlass, Fenders, Fuel funnel, Hydraulic gangway, Jerry cans for diesel, Mooring ropes, Outboard engine, Plastic bucket, Repair box for dinghy, Spare anchor (Reserve, Auxiliary anchor), Sprayhood, Swimming ladder, Winch handles</b>
Entertainment	<b>LCD TV, Outdoor speakers, Stand up paddle (SUP) - FREE</b>
Galley	<b>Additional fridge, Gas bottles, Ice maker, Kitchen utensils (Galley equipment, cutlery), Microwave, NESPRESSO coffee machine, Oven, Refrigerator, Stove</b>
Interior	<b>Bilge pump handle, Convertible table, Yacht documents</b>
Navigation	<b>Compass, Divider, nautic chart, Echosounder/Depthsounder, GPS chart plotter – cockpit, Hand bearing compass, Parallel ruler, Pilot book, Radar reflector, Speedometer (Speed log), Wind instrument/Anemometer</b>
Safety	<b>Emergency tiller, Engine spare parts, Fire extinguisher, First aid kit, Floating light, Fog horn, Horseshoe lifebuoy, Life belts (Safety harness), Life jackets, Liferaft, Oars (Paddles), Repair kit, Set of tools, Torch</b>
Sails	<b>Electric winch</b>
Yacht electrics	<b>220V socket, Air Conditioning, Batteries, Battery charger, Generator, Inverter, Solar panels, Watermaker - desalinator</b>



**WEBSITE**

[www.plujeme.cz](http://www.plujeme.cz)



**PHONE**

+420 720 755 085



**MOBILE**

+420 777 170 276



**E-MAIL**

[info@plujeme.cz](mailto:info@plujeme.cz)



**PLUJEME RÁDI S.R.O.**

Dlouhá 730/35, 11000 Praha 1 – Staré Město, Czech Republic

## SERVICES

SELECTED SERVICES	OBLIGATORY	PAYMENT TYPE	PRICE
<b>Generator</b> (Payable at the base) <b>Season: 2026.</b> Option 1 - Free of charge 8 hours per day, any additional hour comes with a cost of 10 euros per hour. Option 2 - Unlimited use for 200 euros per week. Payable on the spot with cash.	Yes	per hour	<b>0,00 €</b>
<b>Starter pack</b> (Payable at the base) <b>Season: 2026.</b> End cleaning, 1x Cooking gas, Water, Linen 1 set (2 sheets, 1 pillow case, 1 bath towel, 1 face towel) per person, Harbour fees for the first & last night. * If there is pet on board, then double cleaning will be applied.; Payable on the spot with cash 🧺 bag with Greek Local Products is offered to all of our charters as a welcome gift.	Yes	per booking	<b>450,00 €</b>
<b>Cook</b> (Payable at the base) <b>Season: 2026.</b> (Crew require their own cabin); Only responsible for daily cooking / provisioning and cleaning relevant to kitchen area; Payable on the spot with cash; Crew Cancellation Policy A Down payment of 25% is required upon confirmation, and the rest are payable on the spot with cash. Crew cancelled 4 weeks prior to embarkation will have 25% of total crew fee applicable. Crew cancelled less than 14 days prior to embarkation will have 100% of the total crew fee applicable.	No	per day + food	<b>200,00 €</b>
<b>Crew change</b> (Payable at the base) <b>Season: 2026.</b> Payable on the spot with cash Applicable only at one of our bases: Included : Formalities (contract, crew list, etc.) and one day of mooring fees. Not included: Yachts cleaning and laundry.	No	per booking	<b>150,00 €</b>
<b>Early boarding/check-in</b> (Payable at the base) <b>Season: 2026.</b> Access to the yacht by 14:00 In the event of delay beyond our control refunds will be made.; Payable on the spot with cash	No	per booking	<b>200,00 €</b>
<b>Hostess</b> (Payable at the base) <b>Season: 2026.</b> *crew require their own cabin; Payable on the spot with cash Crew Cancellation Policy A Down payment of 25% is required upon confirmation, and the rest are payable on the spot with cash. Crew cancelled 4 weeks prior to embarkation will have 25% of total crew fee applicable. Crew cancelled less than 14 days prior to embarkation will have 100% of the total crew fee applicable.	No	per day + food	<b>190,00 €</b>

<b>Internet pack</b> (Payable at the base) <b>Season: 2026.</b> +20 € per week after the 1st (WiFi hotspot for up to 5 devices and unlimited usage of internet); Payable on the spot with cash	No	per booking	<b>70,00 €</b>
<b>Linen Pack</b> (Payable at the base) <b>Season: 2026.</b> 1 Extra set of linen (2 sheets, 1 pillow case, 1 bath towel, 1 face towel); Payable on the spot with cash	No	per set	<b>10,00 €</b>
<b>Non refundable deposit/ insurance</b> (Payable at the base) <b>Season: 2026.</b> + refundable deposit 1000 EUR; non refundable payable on spot in cash and refundable payable by credit card on spot * Non-Refundable Deposit is mandatory on all skippered charters.	No	per booking	<b>400,00 €</b>
<b>Skipper</b> (Payable at the base) <b>Season: 2026.</b> (Crew require their own cabin); Payable on the spot with cash Crew Cancellation Policy A Down payment of 25% is required upon confirmation, and the rest are payable on the spot with cash. Crew cancelled 4 weeks prior to embarkation will have 25% of total crew fee applicable. Crew cancelled less than 14 days prior to embarkation will have 100% of the total crew fee applicable. Damage waiver is obligatory for skippered charters.	No	per day + food	<b>210,00 €</b>
<b>Welcome package</b> (Payable at the base) <b>Season: 2026.</b> Toilet and Kitchen rolls, matches, Plastic bags for rubbish, 1 Dish Sponge, 1 Dish, Soap, Sugar, Salt and Pepper, Coffee, 6 bottles of Water, 1 bottle of wine, 6 cans of Coke, 6 cans of Beer, Milk, Orange Juice; Payable on the spot with cash	No	per booking	<b>70,00 €</b>



**WEBSITE**

[www.plujeme.cz](http://www.plujeme.cz)



**PHONE**

+420 720 755 085



**MOBILE**

+420 777 170 276



**E-MAIL**

[info@plujeme.cz](mailto:info@plujeme.cz)



**PLUJEME RÁDI S.R.O.**

Dlouhá 730/35, 11000 Praha 1 – Staré Město, Czech Republic

## ADDITIONAL EXTRAS

EXTRA	OBLIGATORY	PAYMENT TYPE	PRICE
<b>Automatic Inflatable Life Jacket</b> (Payable at the base) <b>Season: 2026.</b> Payable on the spot with cash - Payable at the base	No	per piece	<b>30,00 €</b>
<b>Beach towel</b> (Payable at the base) <b>Season: 2026.</b> Payable on the spot with cash - Payable at the base	No	per piece	<b>5,00 €</b>
<b>Bed linen</b> (Payable at the base) <b>Season: 2026.</b> Payable on the spot with cash - Payable at the base	No	per set	<b>10,00 €</b>
<b>Blister</b> (Payable at the base) <b>Season: 2026.</b> + additional security deposit 500EUR; Payable on the spot with cash - Payable at the base	No	per week	<b>200,00 €</b>
<b>Electric outboard engine</b> (Payable at the base) <b>Season: 2026.</b> 3 HP; Subject to availability, payable on the spot with cash - Payable at the base	No	per week	<b>110,00 €</b>
<b>Grill/Barbecue/Plancha</b> (Payable at the base) <b>Season: 2026.</b> Gas - Payable at the base	No	per week	<b>100,00 €</b>
<b>Kayak</b> (Payable at the base) <b>Season: 2026.</b> Payable on the spot with cash - Payable at the base	No	per week	<b>130,00 €</b>
<b>Life jacket (children)</b> (Payable at the base) <b>Season: 2026.</b> for children under 25 kg, one included in every yacht free of charge; Payable on the spot with cash - Payable at the base	No	per week/ person	<b>20,00 €</b>
<b>Railing net (Safety net)</b> (Payable at the base) <b>Season: 2026.</b> 200 € for yachts up to 46 ft., 300 € per week for yachts above 46ft & catamarans (Half price if the railing net is supplied uninstalled). Payable on the spot with cash - Payable at the base	No	per week	<b>300,00 €</b>
<b>SEA-D00 underwater scooter</b> (Payable at the base) <b>Season: 2026.</b> Payable on the spot with cash - Payable at the base	No	per week	<b>150,00 €</b>
<b>Snorkeling equipment</b> (Payable at the base) <b>Season: 2026.</b> The set contains mask, snorkel and flippers; Payable on the spot with cash - Payable at the base	No	per week/ person	<b>10,00 €</b>

**Plujeme**



**WEBSITE**  
www.plujeme.cz



**PHONE**  
+420 720 755 085



**MOBILE**  
+420 777 170 276



**E-MAIL**  
info@plujeme.cz



**PLUJEME RÁDI S.R.O.**  
Dlouhá 730/35, 11000 Praha 1 – Staré Město, Czech Republic

## PRICE AND AVAILABILITY

25.04. - 02.05.2026 2.993 € 6.650 €	02.05. - 09.05.2026 2.993 € 6.650 €	09.05. - 16.05.2026 2.993 € 6.650 €	16.05. - 23.05.2026 NOT AVAILABLE
23.05. - 30.05.2026 NOT AVAILABLE	30.05. - 06.06.2026 NOT AVAILABLE	06.06. - 20.06.2026 NOT AVAILABLE	20.06. - 04.07.2026 NOT AVAILABLE
04.07. - 11.07.2026 NOT AVAILABLE	11.07. - 18.07.2026 NOT AVAILABLE	18.07. - 25.07.2026 NOT AVAILABLE	25.07. - 01.08.2026 NOT AVAILABLE
01.08. - 08.08.2026 NOT AVAILABLE	08.08. - 15.08.2026 NOT AVAILABLE	15.08. - 22.08.2026 9.630 € 9.800 €	22.08. - 29.08.2026 NOT AVAILABLE
29.08. - 05.09.2026 NOT AVAILABLE	05.09. - 12.09.2026 NOT AVAILABLE	12.09. - 26.09.2026 NOT AVAILABLE	26.09. - 03.10.2026 6.390 € 6.650 €
03.10. - 10.10.2026 NOT AVAILABLE	10.10. - 17.10.2026 NOT AVAILABLE	17.10. - 24.10.2026 2.970 € 6.050 €	24.10. - 31.10.2026 2.970 € 6.050 €
31.10. - 07.11.2026 2.970 € 6.050 €	07.11. - 14.11.2026 2.970 € 6.050 €	14.11. - 21.11.2026 2.970 € 6.050 €	21.11. - 28.11.2026 2.970 € 6.050 €
28.11. - 03.04.2027 NOT AVAILABLE			



**WEBSITE**  
[www.plujeme.cz](http://www.plujeme.cz)



**E-MAIL**  
[info@plujeme.cz](mailto:info@plujeme.cz)



**PHONE**  
+420 720 755 085



**PLUJEME RÁDI S.R.O.**  
Dlouhá 730/35, 11000 Praha 1 – Staré Město, Czech Republic



**MOBILE**  
+420 777 170 276

## PRICE AND AVAILABILITY

03.04. - 10.04.2027 <b>3.933 €</b> 6.050 €	10.04. - 17.04.2027 <b>3.933 €</b> 6.050 €	17.04. - 24.04.2027 <b>4.323 €</b> 6.650 €	24.04. - 01.05.2027 <b>4.323 €</b> 6.650 €
01.05. - 08.05.2027 <b>4.988 €</b> 6.650 €	08.05. - 15.05.2027 <b>4.988 €</b> 6.650 €	15.05. - 22.05.2027 <b>6.353 €</b> 8.470 €	22.05. - 29.05.2027 <b>5.929 €</b> 8.470 €
29.05. - 05.06.2027 <b>6.353 €</b> 8.470 €	05.06. - 12.06.2027 <b>6.776 €</b> 8.470 €	12.06. - 19.06.2027 <b>6.860 €</b> 9.800 €	19.06. - 26.06.2027 <b>7.840 €</b> 9.800 €
26.06. - 03.07.2027 <b>7.840 €</b> 9.800 €	03.07. - 10.07.2027 <b>8.330 €</b> 9.800 €	10.07. - 17.07.2027 <b>8.330 €</b> 9.800 €	17.07. - 24.07.2027 <b>8.330 €</b> 9.800 €
24.07. - 31.07.2027 <b>9.560 €</b> 11.950 €	31.07. - 07.08.2027 <b>9.560 €</b> 11.950 €		



**WEBSITE**  
[www.plujeme.cz](http://www.plujeme.cz)



**E-MAIL**  
[info@plujeme.cz](mailto:info@plujeme.cz)



**PHONE**  
+420 720 755 085



**MOBILE**  
+420 777 170 276



**PLUJEME RÁDI S.R.O.**  
Dlouhá 730/35, 11000 Praha 1 – Staré Město, Czech Republic

## PRICE AND AVAILABILITY

07.08. - 14.08.2027 <b>9.560 €</b> 11.950 €	14.08. - 21.08.2027 <b>8.330 €</b> 9.800 €	21.08. - 28.08.2027 <b>8.820 €</b> 9.800 €	28.08. - 04.09.2027 <b>8.820 €</b> 9.800 €
04.09. - 11.09.2027 <b>8.820 €</b> 9.800 €	11.09. - 18.09.2027 <b>7.623 €</b> 8.470 €	18.09. - 25.09.2027 <b>7.623 €</b> 8.470 €	25.09. - 02.10.2027 <b>5.985 €</b> 6.650 €
02.10. - 09.10.2027 <b>5.143 €</b> 6.050 €	09.10. - 16.10.2027 <b>5.143 €</b> 6.050 €	16.10. - 23.10.2027 <b>4.538 €</b> 6.050 €	23.10. - 30.10.2027 <b>4.538 €</b> 6.050 €
30.10. - 06.11.2027 <b>4.538 €</b> 6.050 €	06.11. - 13.11.2027 <b>4.538 €</b> 6.050 €	13.11. - 20.11.2027 <b>4.538 €</b> 6.050 €	20.11. - 27.11.2027 <b>4.538 €</b> 6.050 €
27.11. - 04.12.2027 <b>4.538 €</b> 6.050 €	04.12. - 31.12.2027 NOT AVAILABLE		



WEBSITE

[www.plujeme.cz](http://www.plujeme.cz)



E-MAIL

[info@plujeme.cz](mailto:info@plujeme.cz)



PHONE

+420 720 755 085



MOBILE

+420 777 170 276



PLUJEME RÁDI S.R.O.

Dlouhá 730/35, 11000 Praha 1 – Staré Město, Czech Republic