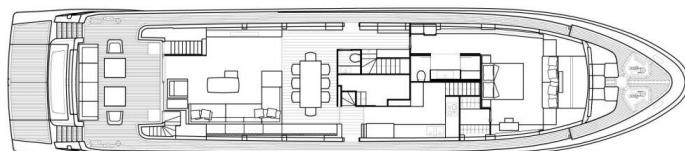


# SANLORENZO YACHT SL106

Dinaia (2018)

Luxury Charter Sanlorenzo Yacht SL106 Dinaia, built in 2018 is anchored in the **Athens, Flisvos Delta marina, Athens area/Saronic/Peloponese, Greece**. It has **5 cabins**, can accommodate **10 people** and has **6 toilets**. Bed linen and kitchen equipment are included in the price.



## YACHT SPECIFICATIONS

Yacht Base

**Athens, Flisvos Delta marina, Greece**

Yacht ID

**13129**

Brands

**San Lorenzo**

Yacht name

**Dinaia**

Production year

**2018**

Length

**106 ft**

Cabins

**5**

Berths

**10**

WC

**6**

Engine

**2 x 2434 HP**

Fuel tank

**01**



**WEBSITE**

[www.plujeme.cz](http://www.plujeme.cz)



**PHONE**

+420 720 755 085



**MOBILE**

+420 777 170 276



**E-MAIL**

[info@plujeme.cz](mailto:info@plujeme.cz)



**PLUJEME RÁDI S.R.O.**

Dlouhá 730/35, 11000 Praha 1 – Staré Město, Czech Republic

## STANDARD YACHT EQUIPMENT

Deck	<b>Hydraulic lifting swimming platform, Sun deck, Tender</b>
Entertainment	<b>Bike, Donut, Fishing equipment, Jet Ski SEA-D00 Spark, Kayak tandem, Mono ski, Satellite TV receiver, Sea Scooter, Seabob, Snorkeling equipment, Stand up paddle (SUP), TV, Water skis, Wi-Fi Internet, Windsurf</b>
Navigation	<b>Stabilizers</b>
Yacht electrics	<b>Generator</b>



**WEBSITE**

[www.plujeme.cz](http://www.plujeme.cz)



**E-MAIL**

[info@plujeme.cz](mailto:info@plujeme.cz)



**PHONE**

+420 720 755 085



**MOBILE**

+420 777 170 276



**PLUJEME RÁDI S.R.O.**

Dlouhá 730/35, 11000 Praha 1 – Staré Město, Czech Republic

## SERVICES

SELECTED SERVICES	OBLIGATORY	PAYMENT TYPE	PRICE
<b>APA (Advance Provisioning Allowance)</b> <i>(Payable at the base)</i> <b>Season: 2026.</b>	Yes	per booking	<b>0,00 €</b>



#### WEBSITE

[www.plujeme.cz](http://www.plujeme.cz)



#### E-MAIL

[info@plujeme.cz](mailto:info@plujeme.cz)



#### PHONE

+420 720 755 085



#### MOBILE

+420 777 170 276



#### PLUJEME RÁDI S.R.O.

Dlouhá 730/35, 11000 Praha 1 – Staré Město, Czech Republic

## PRICE AND AVAILABILITY

25.04. - 02.05.2026 69.000 €	02.05. - 09.05.2026 69.000 €	09.05. - 16.05.2026 69.000 €	16.05. - 23.05.2026 69.000 €
24.05. - 31.05.2026 NOT AVAILABLE	04.06. - 08.06.2026 NOT AVAILABLE	13.06. - 20.06.2026 92.000 €	20.06. - 27.06.2026 92.000 €
28.06. - 10.07.2026 NOT AVAILABLE	11.07. - 18.07.2026 NOT AVAILABLE	01.08. - 21.08.2026 NOT AVAILABLE	22.08. - 29.08.2026 NOT AVAILABLE
05.09. - 12.09.2026 92.000 €	12.09. - 19.09.2026 92.000 €	19.09. - 26.09.2026 92.000 €	26.09. - 03.10.2026 92.000 €
03.10. - 10.10.2026 69.000 €	10.10. - 17.10.2026 69.000 €	17.10. - 24.10.2026 69.000 €	24.10. - 31.10.2026 69.000 €
31.10. - 07.11.2026 69.000 €	07.11. - 14.11.2026 69.000 €	14.11. - 21.11.2026 69.000 €	21.11. - 28.11.2026 69.000 €
28.11. - 05.12.2026 69.000 €			



WEBSITE

[www.plujeme.cz](http://www.plujeme.cz)



E-MAIL

[info@plujeme.cz](mailto:info@plujeme.cz)



PHONE

+420 720 755 085



MOBILE

+420 777 170 276



PLUJEME RÁDI S.R.O.

Dlouhá 730/35, 11000 Praha 1 – Staré Město, Czech Republic

## PRICE AND AVAILABILITY

05.12. - 12.12.2026

69.000 €

12.12. - 19.12.2026

69.000 €

19.12. - 26.12.2026

69.000 €



### WEBSITE

[www.plujeme.cz](http://www.plujeme.cz)



### E-MAIL

[info@plujeme.cz](mailto:info@plujeme.cz)



### PHONE

+420 720 755 085



### MOBILE

+420 777 170 276



### PLUJEME RÁDI S.R.O.

Dlouhá 730/35, 11000 Praha 1 – Staré Město, Czech Republic