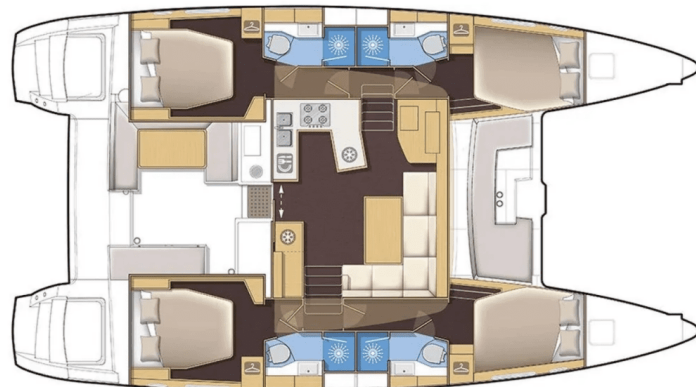


# LAGOON 450

Pura Vida (2015)

Catamaran Lagoon 450 Pura Vida, built in 2015 is anchored in the St. Vincent & Grenadines, Blue Lagoon Marina, St. Vincent, Caribbean. It has 4 cabins, can accommodate 8 people and has 4 toilets. Bed linen and kitchen equipment are included in the price.



## YACHT SPECIFICATIONS

Yacht Base

**St. Vincent & Grenadines, Blue Lagoon Marina, Caribbean**

Yacht ID

**11758**

Brands

**Lagoon**

Yacht name

**Pura Vida**

Production year

**2015**

Length

**46 ft**

Cabins

**4**

Berths

**8**

Max Persons

**8**

WC

**4**

Engine

**2 x 0 HP**

Fuel tank

**454 l**



**WEBSITE**

[www.plujeme.cz](http://www.plujeme.cz)



**PHONE**

+420 720 755 085



**MOBILE**

+420 777 170 276



**E-MAIL**

[info@plujeme.cz](mailto:info@plujeme.cz)



**PLUJEME RÁDI S.R.O.**

Dlouhá 730/35, 11000 Praha 1 – Staré Město, Czech Republic

## STANDARD YACHT EQUIPMENT

Additional	Flag
Comfort	<b>Cockpit cushions, Pillows, Windscoops</b>
Deck	<b>Anchor with chain, Boat hook, Cockpit light, Deck brush, Dinghy (byboat) pump, Dinghy anchor, Dinghy with outboard engine, Fenders, Grill/Barbecue/Plancha, Impeller, V-belt, oilfilter, Mooring ropes, Plastic bucket, Repair box for dinghy, Reserve motor oil, Spare anchor (Reserve, Auxiliary anchor), Winch handles</b>
Galley	<b>Freezer, Fresh juice maker, Gas bottles, Kitchen utensils (Galley equipment, cutlery), Refrigerator</b>
Interior	<b>Bilge pump handle, Clothes hangers</b>
Navigation	<b>Binoculars, Divider, nautic chart, GPS chart plotter, Hand bearing compass, Nautical charts, Parallel ruler</b>
Safety	<b>Distress flare box, Emergency tiller, Fire blanket, Fire extinguisher, First aid kit, Fog horn, Horseshoe lifebuoy, Life belts (Safety harness), Life jackets, Liferaft, Oars (Paddles), Padlock, Set of tools, Torch, Wire (shroud) cutter</b>
Yacht electrics	<b>Air Conditioning, Batteries, Generator, Inverter, Shore power cable, Solar panels, Watermaker - desalinator</b>



**WEBSITE**

[www.plujeme.cz](http://www.plujeme.cz)



**PHONE**

+420 720 755 085



**MOBILE**

+420 777 170 276



**E-MAIL**

[info@plujeme.cz](mailto:info@plujeme.cz)



**PLUJEME RÁDI S.R.O.**

Dlouhá 730/35, 11000 Praha 1 – Staré Město, Czech Republic

## SERVICES

SELECTED SERVICES	OBLIGATORY	PAYMENT TYPE	PRICE
<b>Cell phone</b> (Payable at the base) <b>Season: 2025-2026.</b>	Yes	per week	<b>5,00 €</b>
<b>Charter pack</b> (Payable at the base) <b>Season: 2025-2026.</b> included in price, charter pack includes final cleaning, bed linen & towels, dinghy, and outboard motor	Yes	per booking	<b>0,00 €</b>
<b>Damage waiver</b> (Payable at the base) <b>Season: 2025-2026.</b> \$50/ night Hull Damage Waiver maximum \$500	Yes	per day	<b>50,00 €</b>
<b>ASA Logbook</b> (Payable at the base) <b>Season: 2025-2026.</b>	No	per piece	<b>23,00 €</b>
<b>ASA Skipper</b> (Payable now) <b>Season: 2025-2026.</b> ASA Certified Instructor - Does not include provisioning for instructor/skipper. A cabin is required for their use.	No	per day + food	<b>225,00 €</b>
<b>Cook</b> (Payable now) <b>Season: 2025-2026.</b> Cooks \$170 per Day (Inclusive of first and last day) + provisions	No	per day + food	<b>170,00 €</b>
<b>One way</b> (Payable at the base) <b>Season: 2025-2026.</b> one-way charter to Grenada	No	per booking	<b>1.500,00 €</b>
<b>Skipper</b> (Payable now) <b>Season: 2025-2026.</b> Skipper \$195 per day (inclusive of first and last day) + provisions	No	per day + food	<b>195,00 €</b>
<b>Sleep over before check in</b> (Payable at the base) <b>Season: 2025-2026.</b> Sleep aboard from 17:00 \$150/ per cabin. Minimum \$300	No	per cabin	<b>150,00 €</b>



**WEBSITE**  
www.plujeme.cz



**PHONE**  
+420 720 755 085



**MOBILE**  
+420 777 170 276



**E-MAIL**  
info@plujeme.cz



**PLUJEME RÁDI S.R.O.**  
Dlouhá 730/35, 11000 Praha 1 – Staré Město, Czech Republic

## ADDITIONAL EXTRAS

EXTRA	OBLIGATORY	PAYMENT TYPE	PRICE
<b>Kayak</b> (Payable at the base) <b>Season: 2025-2026.</b> Rental - Payable at the base	No	per day	<b>18,00 €</b>
<b>Kayak tandem</b> (Payable at the base) <b>Season: 2025-2026.</b> Rental - Payable at the base	No	per day	<b>21,00 €</b>
<b>Stand up paddle (SUP)</b> (Payable at the base) <b>Season: 2025-2026.</b> Rental - Payable at the base	No	per day	<b>25,00 €</b>



#### WEBSITE

[www.plujeme.cz](http://www.plujeme.cz)



#### E-MAIL

[info@plujeme.cz](mailto:info@plujeme.cz)



#### PHONE

+420 720 755 085



#### MOBILE

+420 777 170 276



#### PLUJEME RÁDI S.R.O.

Dlouhá 730/35, 11000 Praha 1 – Staré Město, Czech Republic

## PRICE AND AVAILABILITY

14.11. - 21.11.2026 <b>6.259 €</b>	21.11. - 28.11.2026 <b>5.795 €</b> 6.439 €	28.11. - 05.12.2026 <b>5.795 €</b> 6.439 €	05.12. - 12.12.2026 <b>5.795 €</b> 6.439 €
12.12. - 19.12.2026 <b>6.071 €</b> 6.746 €	23.12. - 02.01.2027 NOT AVAILABLE	02.01. - 09.01.2027 <b>7.850 €</b>	09.01. - 16.01.2027 <b>7.237 €</b>
17.01. - 26.01.2027 NOT AVAILABLE	30.01. - 06.02.2027 <b>8.403 €</b>		



### WEBSITE

[www.plujeme.cz](http://www.plujeme.cz)



### E-MAIL

[info@plujeme.cz](mailto:info@plujeme.cz)



### PHONE

+420 720 755 085



### MOBILE

+420 777 170 276



### PLUJEME RÁDI S.R.O.

Dlouhá 730/35, 11000 Praha 1 – Staré Město, Czech Republic

## PRICE AND AVAILABILITY

06.02. - 13.02.2027 8.589 €	13.02. - 22.02.2027 NOT AVAILABLE	27.02. - 06.03.2027 8.587 €	06.03. - 13.03.2027 8.587 €
13.03. - 20.03.2027 8.587 €	20.03. - 27.03.2027 8.587 €	27.03. - 03.04.2027 8.587 €	03.04. - 10.04.2027 8.587 €
10.04. - 17.04.2027 8.587 €	17.04. - 24.04.2027 8.587 €	24.04. - 01.05.2027 6.746 €	01.05. - 08.05.2027 6.439 €
08.05. - 15.05.2027 6.439 €	15.05. - 22.05.2027 6.439 €	22.05. - 29.05.2027 6.439 €	29.05. - 05.06.2027 6.439 €
05.06. - 12.06.2027 6.439 €	12.06. - 19.06.2027 6.439 €	19.06. - 26.06.2027 6.439 €	26.06. - 03.07.2027 6.439 €
03.07. - 10.07.2027 6.439 €			



**WEBSITE**  
[www.plujeme.cz](http://www.plujeme.cz)



**E-MAIL**  
[info@plujeme.cz](mailto:info@plujeme.cz)



**PHONE**  
+420 720 755 085



**PLUJEME RÁDI S.R.O.**  
Dlouhá 730/35, 11000 Praha 1 – Staré Město, Czech Republic



**MOBILE**  
+420 777 170 276