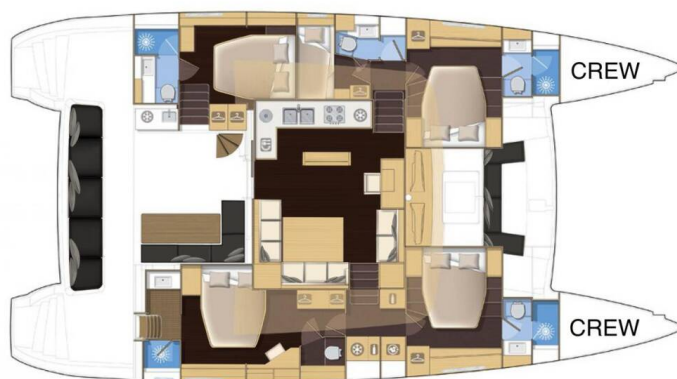
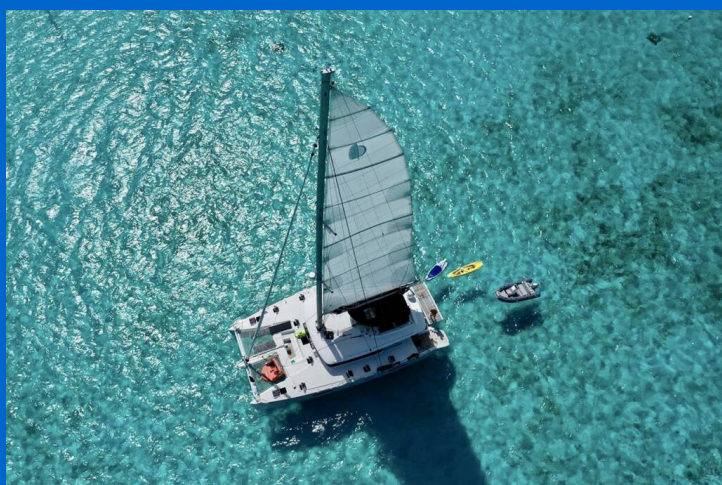


# LAGOON 560

Taipan (2019)

Catamaran Lagoon 560 Taipan, built in 2019 is anchored in the Marina di Portisco, Sardinia, Italy. It has 5 + 2 cabins, can accommodate 10 + 2 people and has 5 toilets. Bed linen and kitchen equipment are included in the price.



## YACHT SPECIFICATIONS

Yacht Base

**Marina di Portisco, Italy**

Yacht ID

**11068**

Brands

**Lagoon**

Yacht name

**Taipan**

Production year

**2019**

Length

**56 ft**

Cabins

**5 + 2**

Berths

**10 + 2**

WC

**5**

Engine

**2 x 110 HP**

Fuel tank

**1300 l**



**WEBSITE**

[www.plujeme.cz](http://www.plujeme.cz)



**PHONE**

+420 720 755 085



**MOBILE**

+420 777 170 276



**E-MAIL**

[info@plujeme.cz](mailto:info@plujeme.cz)



**PLUJEME RÁDI S.R.O.**

Dlouhá 730/35, 11000 Praha 1 – Staré Město, Czech Republic

## STANDARD YACHT EQUIPMENT

Comfort	<b>Bed linen, Blankets, Cockpit cushions, Pillows</b>
Deck	<b>Anchor, Bathing platform, Bimini top, Cockpit/stern, outside shower, Deck tent, Dinghy with outboard engine, Electric anchor windlass, Flybridge, Main Deck Compass, Spare anchor (Reserve, Auxiliary anchor), Teak cockpit</b>
Entertainment	<b>Indoor speakers, Outdoor speakers, Radio CD player, Snorkeling equipment, TV + DVD, Wi-Fi Internet</b>
Galley	<b>Coffee machine, Freezer, Hot water, Ice maker, Microwave, Oven, Refrigerator, Sink, Stove</b>
Interior	<b>Coolbox, Electric toilet</b>
Navigation	<b>Autopilot, Complete navigation equipment, Echosounder/Depthsounder, GPS chart plotter, GPS on Fly, Log/speed instrument, Navigation (Nautical) charts and nautical guide, Wind instrument/Anemometer</b>
Safety	<b>Black Water Tank, Railing net (Safety net), VHF radio</b>
Sails	<b>Electric winch, Lazy bag</b>
Yacht electrics	<b>Air Conditioning, Generator, Heating, Shore power connection, Solar panels, Watermaker - desalinator</b>



**WEBSITE**

[www.plujeme.cz](http://www.plujeme.cz)



**PHONE**

+420 720 755 085



**MOBILE**

+420 777 170 276



**E-MAIL**

[info@plujeme.cz](mailto:info@plujeme.cz)



**PLUJEME RÁDI S.R.O.**

Dlouhá 730/35, 11000 Praha 1 – Staré Město, Czech Republic

## SERVICES

SELECTED SERVICES	OBLIGATORY	PAYMENT TYPE	PRICE
<b>APA (Advance Provisioning Allowance)</b> (Payable now) <b>Season: 2026.</b>	Yes	per booking	<b>5.000,00 €</b>
<b>Exclusive package</b> (Payable now) <b>Season: 2026.</b> Includes: Professional Skipper and Hostess/Cook; Final cleaning; 2 sets of bed linen, towels, beach towels, bathrobes; Welcome pack; Tender 3,60m with outboard engine 50HP; Unlimited Wi-Fi; Satellite TV + Netflix, Prime Video, Disney Plus; Local tax	Yes	per week	<b>4.900,00 €</b>
<b>Chef</b> (Payable now) <b>Season: 2026.</b>	No	per week + food	<b>1.400,00 €</b>
<b>Early Check in</b> (Payable now) <b>Season: 2026.</b> At: 16:00h	No	per booking	<b>450,00 €</b>
<b>Transfer</b> (Payable now) <b>Season: 2026.</b>	No	one-way	<b>120,00 €</b>

**WEBSITE**[www.plujeme.cz](http://www.plujeme.cz)**E-MAIL**[info@plujeme.cz](mailto:info@plujeme.cz)**PHONE**

+420 720 755 085

**MOBILE**

+420 777 170 276

**PLUJEME RÁDI S.R.O.**

Dlouhá 730/35, 11000 Praha 1 – Staré Město, Czech Republic

## ADDITIONAL EXTRAS

EXTRA	OBLIGATORY	PAYMENT TYPE	PRICE
<b>Grill/Barbecue/Plancha</b> (Payable now) <b>Season: 2026.</b> Payable now	No	per week	<b>30,00 €</b>
<b>Kayak</b> (Payable now) <b>Season: 2026.</b> Payable now	No	per week	<b>120,00 €</b>
<b>Sea Scooter</b> (Payable now) <b>Season: 2026.</b> Sublue Navbow - Payable now	No	per week	<b>500,00 €</b>
<b>Seabob</b> (Payable now) <b>Season: 2026.</b> Payable now	No	per week	<b>1.000,00 €</b>
<b>Stand up paddle (SUP)</b> (Payable now) <b>Season: 2026.</b> Payable now	No	per week	<b>120,00 €</b>

**WEBSITE**[www.plujeme.cz](http://www.plujeme.cz)**E-MAIL**[info@plujeme.cz](mailto:info@plujeme.cz)**PHONE**

+420 720 755 085

**MOBILE**

+420 777 170 276

**PLUJEME RÁDI S.R.O.**

Dlouhá 730/35, 11000 Praha 1 – Staré Město, Czech Republic

## PRICE AND AVAILABILITY

25.04. - 02.05.2026 15.675 € 16.500 €	02.05. - 09.05.2026 15.675 € 16.500 €	09.05. - 16.05.2026 15.675 € 16.500 €	16.05. - 23.05.2026 15.675 € 16.500 €
23.05. - 30.05.2026 17.005 € 17.900 €	30.05. - 06.06.2026 17.005 € 17.900 €	06.06. - 13.06.2026 17.005 € 17.900 €	13.06. - 20.06.2026 NOT AVAILABLE
20.06. - 27.06.2026 18.810 € 19.800 €	27.06. - 04.07.2026 19.475 € 20.500 €	04.07. - 11.07.2026 NOT AVAILABLE	11.07. - 18.07.2026 NOT AVAILABLE
18.07. - 25.07.2026 NOT AVAILABLE	25.07. - 01.08.2026 NOT AVAILABLE	01.08. - 08.08.2026 NOT AVAILABLE	08.08. - 22.08.2026 NOT AVAILABLE
22.08. - 29.08.2026 NOT AVAILABLE	29.08. - 05.09.2026 NOT AVAILABLE	05.09. - 12.09.2026 17.575 € 18.500 €	12.09. - 19.09.2026 16.815 € 17.700 €
19.09. - 26.09.2026 15.485 € 16.300 €	26.09. - 03.10.2026 13.775 € 14.500 €	03.10. - 10.10.2026 13.775 € 14.500 €	10.10. - 17.10.2026 13.775 € 14.500 €
17.10. - 24.10.2026 13.775 € 14.500 €	24.10. - 31.10.2026 13.775 € 14.500 €	31.10. - 07.11.2026 13.775 € 14.500 €	07.11. - 14.11.2026 13.775 € 14.500 €
14.11. - 21.11.2026 13.775 € 14.500 €	21.11. - 28.11.2026 13.775 € 14.500 €	28.11. - 05.12.2026 13.775 € 14.500 €	



WEBSITE

[www.plujeme.cz](http://www.plujeme.cz)



E-MAIL

[info@plujeme.cz](mailto:info@plujeme.cz)



PHONE

+420 720 755 085



MOBILE

+420 777 170 276



PLUJEME RÁDI S.R.O.

Dlouhá 730/35, 11000 Praha 1 – Staré Město, Czech Republic

## PRICE AND AVAILABILITY

05.12. - 12.12.2026

**13.775 €** 14.500 €

12.12. - 19.12.2026

**13.775 €** 14.500 €

19.12. - 26.12.2026

**13.775 €** 14.500 €



### WEBSITE

[www.plujeme.cz](http://www.plujeme.cz)



### E-MAIL

[info@plujeme.cz](mailto:info@plujeme.cz)



### PHONE

+420 720 755 085



### MOBILE

+420 777 170 276



### PLUJEME RÁDI S.R.O.

Dlouhá 730/35, 11000 Praha 1 – Staré Město, Czech Republic